

VORTAC FSM <b>110.4</b> Chan 41	APP CRS <b>224°</b>	Rwy Idg <b>8017</b> TDZE <b>446</b> Apt Elev <b>469</b>
---------------------------------------	------------------------	--

# VOR Z or TACAN Z RWY 26

FORT SMITH RGNL (FSM)

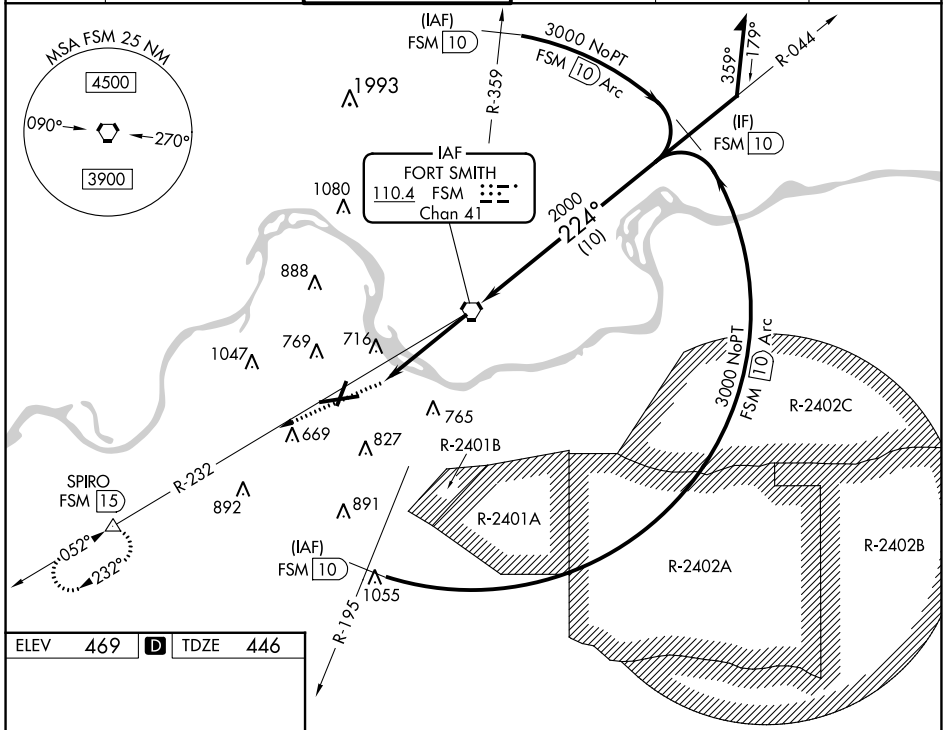
DME Required.

▼ Rwy 26 helicopter visibility reduction below 3/4 SM NA. Inop table does not apply.  
 ▲ Circling Cat E NA when R-2401B active. Arc segment R-195 CCW: NA when restricted areas R-2401 and R-2402 in effect. Circling NA for Cat E north of Rwy 8 and west of Rwy 20. Circling Rwy 20, 26 NA at night.



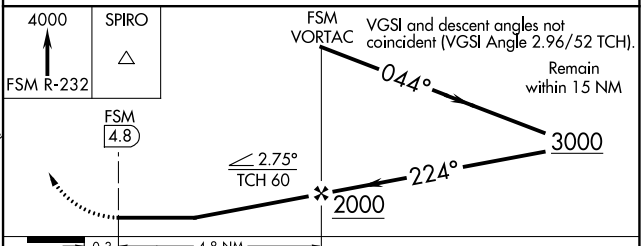
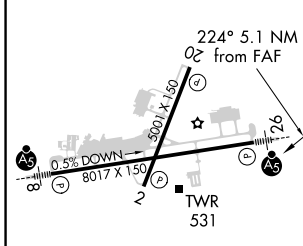
MISSED APPROACH: Climb to 4000 on FSM VORTAC R-232 to SPIRO/1.5 DME and hold, continue climb-in-hold to 4000.

ATIS <b>126.3</b>	RAZORBACK APP CON* <b>120.9 343.75</b>	FORT SMITH TOWER* <b>118.3(CTAF) 323.175</b>	GND CON <b>121.9 275.8</b>	CLNC DEL <b>133.85 278.3</b>	UNICOM <b>122.95</b>
----------------------	---	---	-------------------------------	---------------------------------	-------------------------



ELEV 469	<b>D</b>	TDZE 446
----------	----------	----------

Procedure NA for arrival on FSM VORTAC airway radials 036 CW 090.



HIRL Rwy 8-26 MIRL Rwy 2-20	FAF to MAP 4.8 NM	0.3	4.8 NM		
Knots Min:Sec	60 4:48	90 3:12	120 2:24	150 1:55	180 1:36
<b>C</b> CIRCLING	1140-1	671 (700-1)	1400-2 3/4 931 (1000-2 3/4)	1400-3	931 (1000-3)

SC-1, 19 MAY 2022 to 16 JUN 2022

SC-1, 19 MAY 2022 to 16 JUN 2022