

(HBU3.HBU) 19283

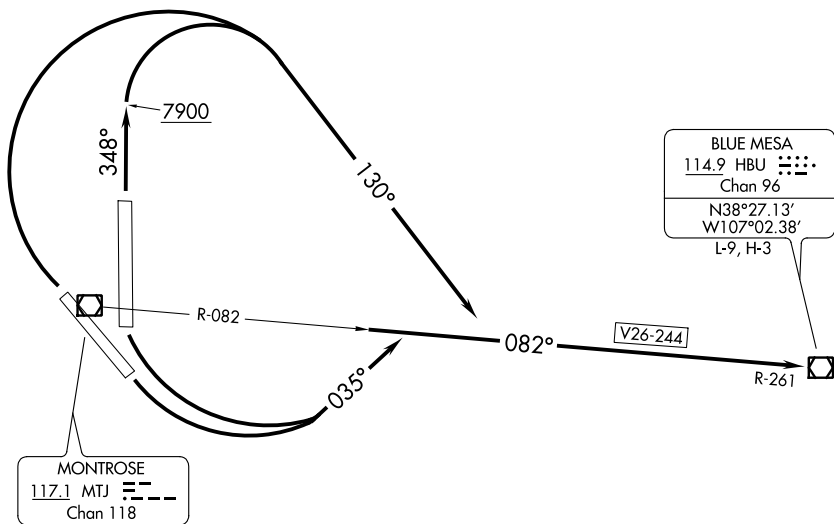
# BLUE MESA THREE DEPARTURE

AL-668 (FAA)

MONTROSE RGNL (MTJ)  
MONTROSE, COLORADO

**TOP ALTITUDE:  
12500**

DENVER RADIO  
122.65  
DENVER CENTER  
127.1 343.65  
UNICOM  
122.8



SW-1, 19 MAY 2022 to 16 JUN 2022

SW-1, 19 MAY 2022 to 16 JUN 2022

### TAKEOFF MINIMUMS

Rwy 13: Standard with minimum climb of 450' per NM to 11300.

Rwy 17: Standard with minimum climb of 420' per NM to 11300.

Rwy 31: Standard with minimum climb of 450' per NM to 11300.

Rwy 35: Standard with minimum climb of 460' per NM to 11300.

NOTE: Chart not to scale.



### DEPARTURE ROUTE DESCRIPTION

TAKEOFF RUNWAYS 13, 17: Climbing left turn to 12500 via heading 035° and MTJ R-082 to HBU VOR/DME, then via assigned route.

TAKEOFF RUNWAY 31: Climbing right turn to 12500 via heading 130° and MTJ R-082 to HBU VOR/DME, then via assigned route.

TAKEOFF RUNWAY 35: Climb heading 348° to 7900 then climbing right turn to 12500 via heading 130° and MTJ R-082 to HBU VOR/DME, then via assigned route.

# BLUE MESA THREE DEPARTURE

(HBU3.HBU) 21JUL16

MONTROSE, COLORADO  
MONTROSE RGNL (MTJ)