

LOC I-MTJ 111.3	APP CRS 168°	Rwy Idg 10000
		TDZE 5708
		Apt Elev 5759

ILS or LOC RWY 17

MONTROSE RGNL (MTJ)

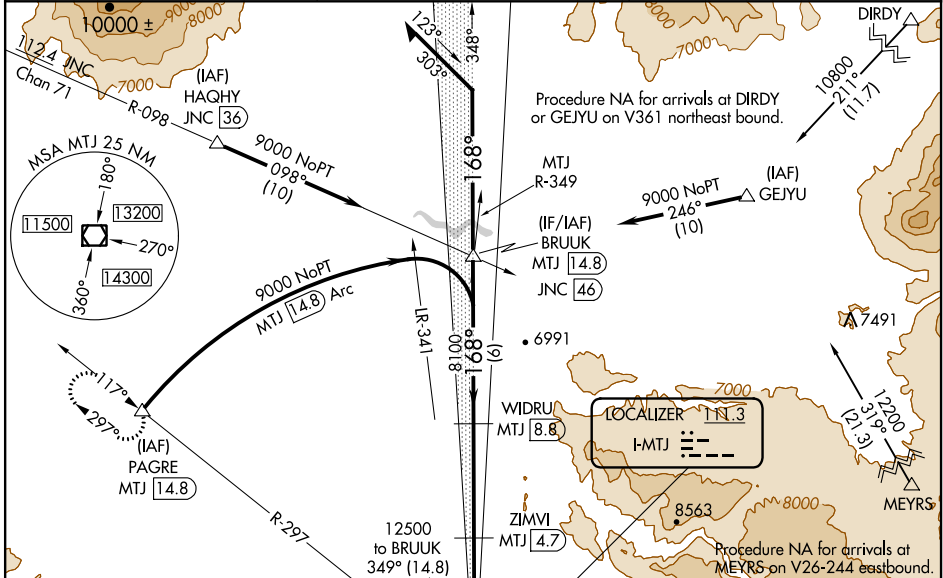
From DIRDY, MYERS, GEJYU: RNAV 1-GPS required. DME required.

NA Circling NA east of Rwy 17 and northeast of Rwy 31. Circling Rwy 31 NA at night. When Circling Rwy 13 at night, operational VGSI required, remain on or above VGSI glidepath until threshold. DME from MTJ VOR/DME. Simultaneous reception of I-MTJ and MTJ DME required. For inop ALS, increase S-LOC 17 Cat C/D visibility to 3/8 SM.

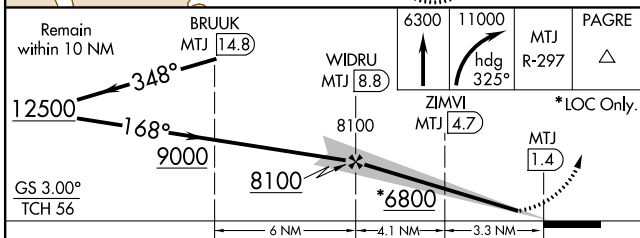


MISSED APPROACH: Climb to 6300 then climbing right turn to 11000 on heading 325° and MTJ VOR/DME R-297 to PAGRE/MTJ 14.8 DME and hold, continue climb-in-hold to 11000.

ASOS 135.225	DENVER CENTER 127.1 343.65	UNICOM 122.8 (CTAF)
------------------------	--------------------------------------	-------------------------------



ELEV 5759	TDZE 5708
168° 7.4 NM from FAF	
0.5% UP	0.3% DOWN
10000 X 1.50	
35	
5807	



CATEGORY	A	B	C	D
S-ILS 17		5908-1/2	200 (200-1/2)	
S-LOC 17		6020-1/2	312 (300-1/2)	
CIRCLING	6280-1 521 (600-1)	6320-1 561 (600-1)	6380-1 3/4 621 (700-1 3/4)	6800-3 1041 (1100-3)

REIL Rws 31, and 35
HIRL Rws 13-31 and 17-35

SW-1, 19 MAY 2022 to 16 JUN 2022

SW-1, 19 MAY 2022 to 16 JUN 2022