

APP CRS	Rwy Idg	<b>10000</b>
<b>340°</b>	TDZE	<b>5734</b>
	Apt Elev	<b>5759</b>

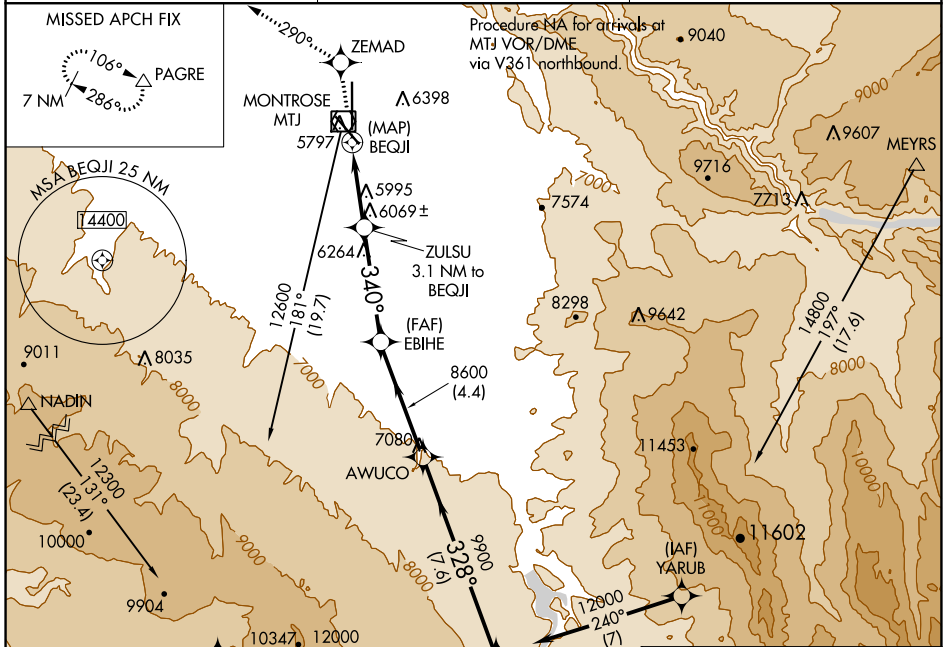
# RNAV (GPS) RWY 35

MONTRÖSE RGNL (MTJ)

**▼** DME/DME RNP-0.3 NA. Night landing Rwy 13 operational VGSI required, remain on or above VGSI glidepath until threshold.  
**▲** Night landing Rwy 31 NA. Helicopter visibility below 3/4 SM NA.

MISSED APPROACH: Climb to 11000 direct ZEMAD on track 290° to PAGRE and hold, continue climb-in-hold to 11000.

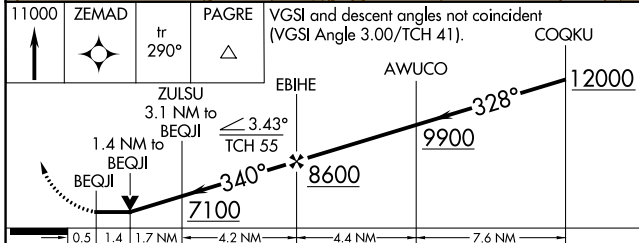
ASOS <b>135.225</b>	DENVER CENTER <b>127.1 343.65</b>	UNICOM <b>122.8 (CTAF)</b>
------------------------	--------------------------------------	-------------------------------



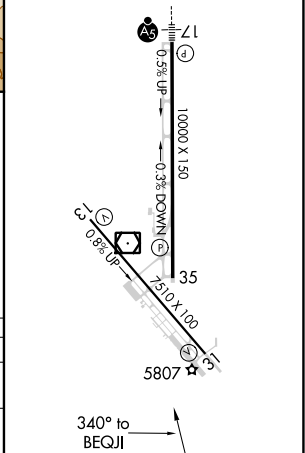
ELEV 5759	<b>D</b> TDZE 5734
-----------	--------------------

REIL Rws 31 and 35  
 HIRL Rws 13-31 and 17-35

11000	ZEMAD	PAGRE	VGSI and descent angles not coincident (VGSI Angle 3.00/TCH 41).	COQKU
↑	✧	△		
	tr 290°			



CATEGORY	A	B	C	D
LNVA MDA	6380-1 646 (700-1)	646 (700-1)	6380-1 3/4 646 (700-1 3/4)	6380-2 646 (700-2)
CIRCLING	6380-1 621 (700-1)	6420-1 661 (700-1)	6640-2 3/4 881 (900-2 3/4)	6700-3 941 (1000-3)



SW-1, 19 MAY 2022 to 16 JUN 2022

SW-1, 19 MAY 2022 to 16 JUN 2022