

HI-ILS or LOC RWY 13

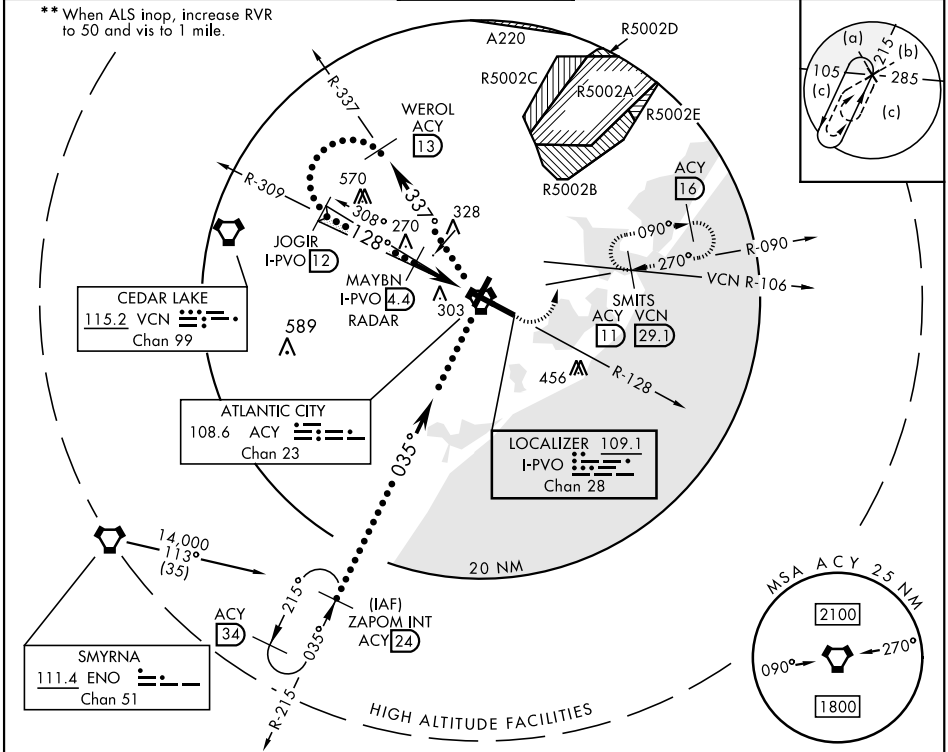
LOC/DME I-PVO 109.1 Chan 28	APCH CRS 128°	Rwy Idg TDZE Arprt Elev 10,000 75 75
---	-------------------------	--

AL-669 [USAF]

ATLANTIC CITY INTL (KACY)

DME or RADAR required. V * When ALS inop, increase RVR to 40 and vis to $\frac{3}{4}$ mile.	MALSR 	MISSED APPROACH: Climb to 600 then climbing left turn to 2000 via ACY R-090 to SMITS INT/ACY 11 DME and hold; or when directed by ATC, climb to 600 then climbing left turn to 2000 via heading 076° and VCN R-106 to SMITS INT/VCN 29.1 DME and hold E, RT, hdg 286° inbound.
---	-----------	--

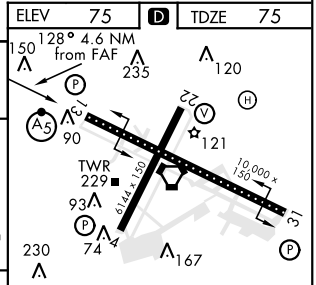
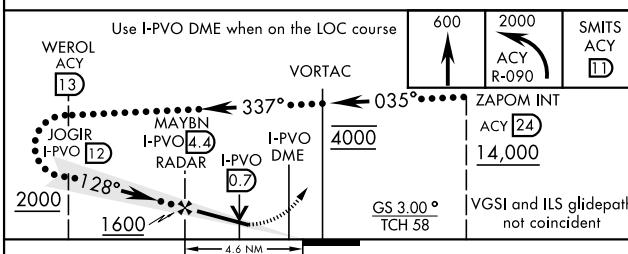
ATIS 125.725 316.15	APP CON 124.6 327.125 134.25 292.2	130° - 309° 310° - 129°	TOWER 120.3 239.0	GND CON 121.9 284.6	CLNC DEL 127.85 353.775	ASR
-------------------------------	--	----------------------------	-----------------------------	-------------------------------	-----------------------------------	-----



NE-2, 19 MAY 2022 to 16 JUN 2022

NE-2, 19 MAY 2022 to 16 JUN 2022

EMERG SAFE ALT 100 NM 4200



CATEGORY	C	D	E
S-ILS 13 *	275/18 200	(200-1/2)	275/24 200 (200-1/2)
S-LOC 13 **	420/24 345 (400-1/2)	420/40 345	(400-3/4)
CIRCLING	540-1 1/2	640-2	760-2 1/2
	465 (500-1 1/2)	565 (600-2)	685 (700-2 1/2)

REIL Rwy 31	REIL Rwy 4-22 and 13-31	TDZL/CL Rwy 13
FAF to MAP 4.6 NM		
Knots	120	140 160 180 200
Min:Sec	2:18	1:58 1:43 1:32 1:23

HI-ILS or LOC RWY 13