

ATLANTIC CITY, NEW JERSEY

HI-VOR/DME or TACAN RWY 31

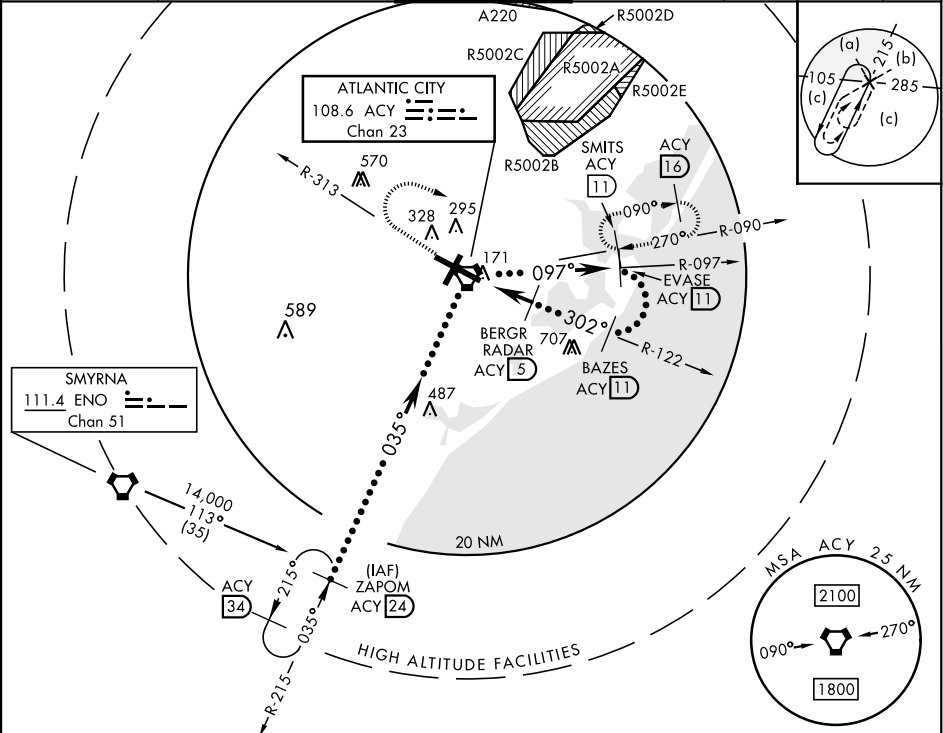
ATLANTIC CITY INTL (KACY)

VORTAC ACY 108.6 Chan 23	APCH CRS 302°	Rwy Idg TDZE Arpt Elev 10,000 64 75
---------------------------------------	-------------------------	---

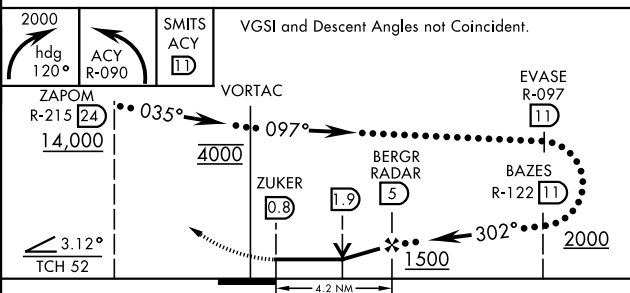
AL-669 [USAF]

MISSED APPROACH: Climbing right turn to 2000 via heading 120° and ACY R-090 to SMITS INT/ACY 11 DME and hold.

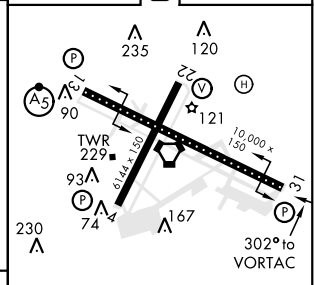
ATIS 125.725 316.15	APP CON 124.6 327.125 130°-309° 134.25 292.2 310°-129°	TOWER 120.3 239.0	GND CON 121.9 284.6	CLNC DEL 127.85 353.775	ASR
-------------------------------	--	-----------------------------	-------------------------------	-----------------------------------	-----



EMERG SAFE ALT 100 NM 4200



ELEV 75	TDZE 64
---------	---------



CATEGORY	C	D	E
S-31	480-1 1/4 417	(500-1 1/4)	480-1 1/2 417 (500-1 1/2)
CIRCLING	540-1 1/2 465 (500-1 1/2)	640-2 565 (600-2)	760-2 1/2 685 (700-2 1/2)

REIL Rwy 31
HIRL Rwy 4-22 and 13-31
TDZL/CL Rwy 13

ATLANTIC CITY, NEW JERSEY
Amdt 04B 4FEF16

39°27'N-74°35'W

ATLANTIC CITY INTL (KACY)

HI-VOR/DME or TACAN RWY 31

NE-2, 19 MAY 2022 to 16 JUN 2022

NE-2, 19 MAY 2022 to 16 JUN 2022