

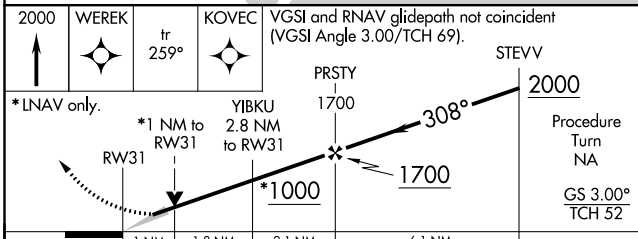
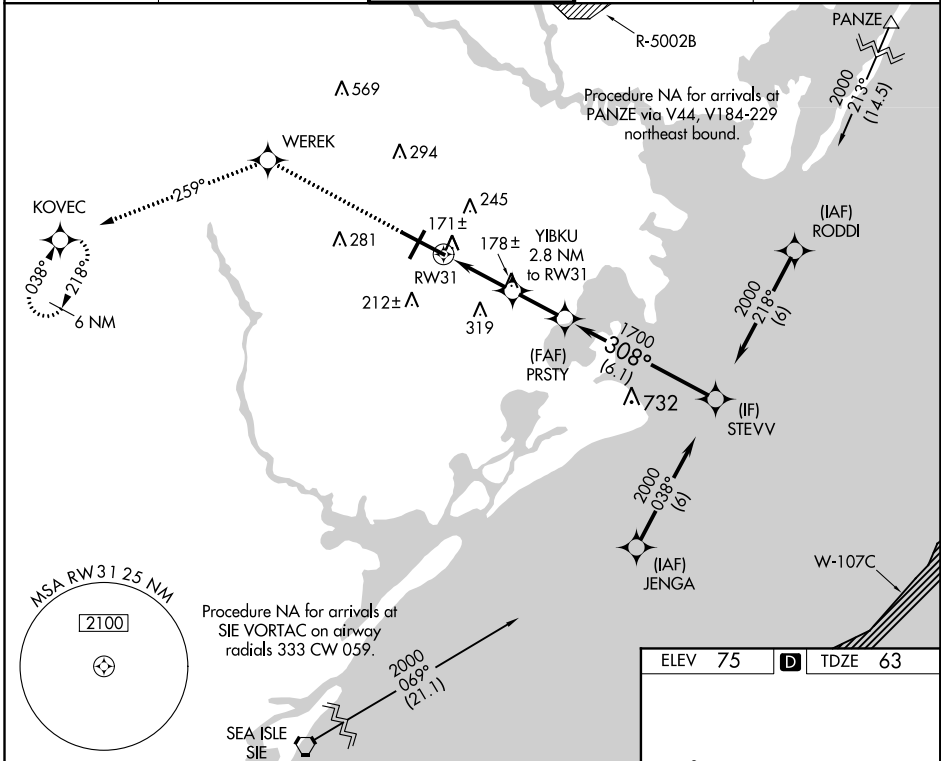
WAAS CH 50113 W31A	APP CRS 308°	Rwy Idg TDZE Apt Elev	10000 63 75
--	------------------------	-----------------------------	--

RNAV (GPS) Y RWY 31

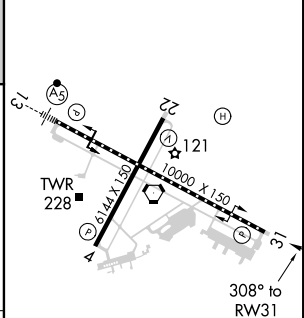
ATLANTIC CITY INTL (ACY)

RNP APCH - GPS.	MISSED APPROACH: Climb to 2000 direct WEREK and on track 259° to KOVEC and hold.
<p>▼ For uncompensated Baro-VNAV systems, LNAV/VNAV NA below -15°C (5°F) or above 48°C (118°F).</p> <p>▲ ASR</p>	

ATIS 125.725 316.15	ATLANTIC CITY APP CON 124.6 327.125	ATLANTIC CITY TOWER 120.3 239.0	GND CON 121.9 284.6	CLNC DEL 127.85 353.775
-------------------------------	---	---	-------------------------------	-----------------------------------



ELEV 75	D	TDZE 63
---------	----------	---------



CATEGORY	A	B	C	D	E
LPV DA	263/40		200 (200-¾)		
LNAV/VNAV DA	421/60		358(400-1¼)		
LNAV MDA	440/50		377 (400-1)		440/60 377 (400-1¼)
CIRCLING	540-1 465 (500-1)	600-1 525 (600-1)	620-1½ 545 (600-1½)	640-2 565 (600-2)	760-2½ 685 (700-2½)

TDZ/CL Rwy 13
HIRL Rwy 4-22 and 13-31
REIL Rwy 31

NE-2, 19 MAY 2022 to 16 JUN 2022

NE-2, 19 MAY 2022 to 16 JUN 2022