

VORTAC ACY 108.6 Chan 23	APP CRS 302°	Rwy ldg 10000 TDZE 64 Apt Elev 75
--	------------------------	--

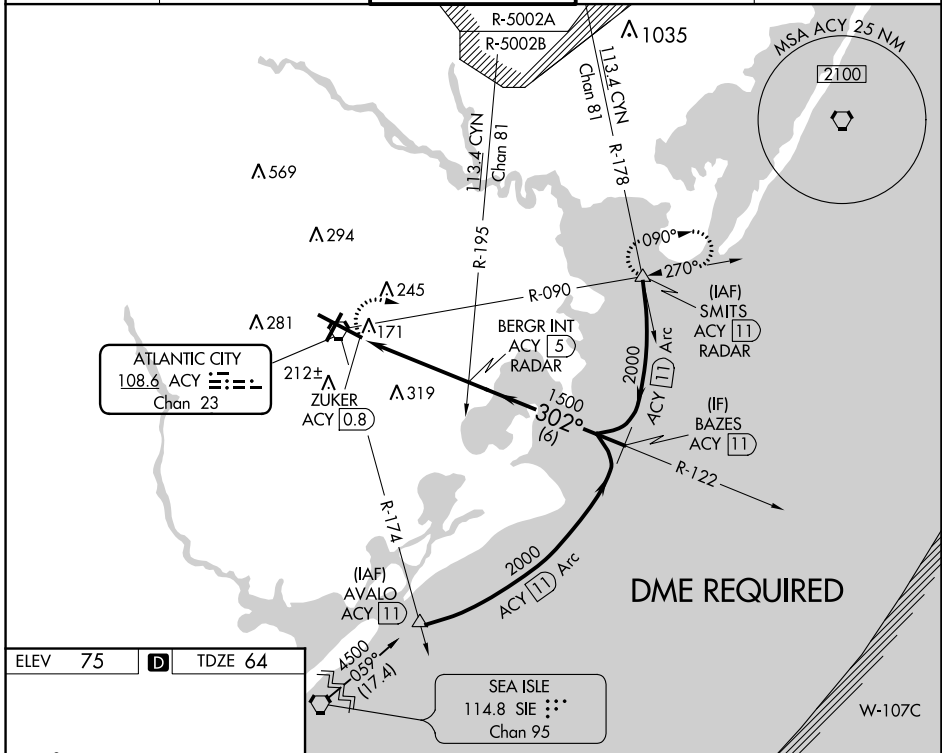
VOR RWY 31

ATLANTIC CITY INTL (ACY)

ASR

MISSED APPROACH: Climbing right turn to 2000 via heading 120° and ACY R-090 to SMITS INT/ACY 11 DME and hold.

ATIS 125.725 316.15	ATLANTIC CITY APP CON 124.6 327.125	ATLANTIC CITY TOWER 120.3 239.0	GND CON 121.9 284.6	CLNC DEL 127.85 353.775
-------------------------------	---	---	-------------------------------	-----------------------------------



ELEV 75	D	TDZE 64
---------	----------	---------

TDZ/CL Rwy 13
HIRL Rwys 4-22 and 13-31
REIL Rwy 31

FAF to MAP 4.2 NM

Knots	60	90	120	150	180
Min:Sec	4:12	2:48	2:06	1:41	1:24

2000 ACY R-090 SMITS (IAF) ACY 11

VGSI and descent angles not coincident (VGSI Angle 3.00/TCH 69).

BERGR INT ACY 5 RADAR

BAZES ACY 11

ZUKER ACY 0.8

ACY 1.9

302°

1500

2000

Procedure Turn NA

SEA ISLE 114.8 SIE Chan 95

W-107C

1.1 NM 3.1 NM 6 NM

CATEGORY	A	B	C	D	E
S-31	480/50	416 (500-1)	480/60	416 (500-1½)	480-1½ 416 (500-1½)
CIRCLING	540-1 465 (500-1)	600-1 525 (600-1)	620-1½ 545 (600-1½)	640-2 565 (600-2)	760-2½ 685 (700-2½)

NE-2, 19 MAY 2022 to 16 JUN 2022

NE-2, 19 MAY 2022 to 16 JUN 2022