


(BLUSH2.BLUSH) 18312

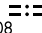
# BLUSH TWO DEPARTURE

AL-759 (FAA)

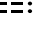
MOLOKAI (MKK) (PHMK)  
KAUNAKAKAI, HAWAII

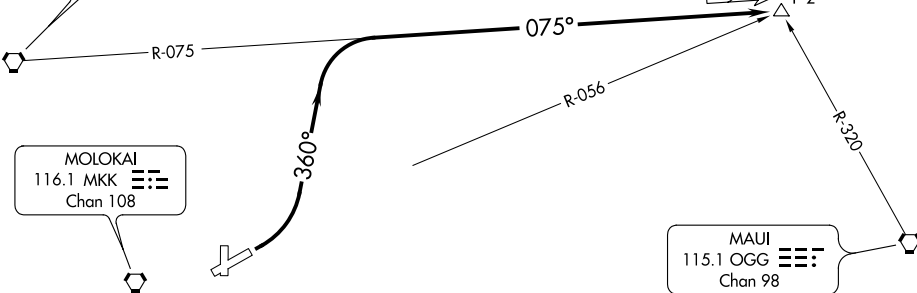
ATIS  
128.2  
GND CON  
121.9  
MOLOKAI TOWER ★  
125.7 306.2  
HCF CENTER  
124.1 317.5

KOKO HEAD  
113.9 CKH   
Chan 86

MOLOKAI  
116.1 MKK   
Chan 108

BLUSH  
N21°20.02'  
W156°40.43'  
P-2

MAUI  
115.1 OGG   
Chan 98



PAC: 19 MAY 2022 to 14 JUL 2022

PAC: 19 MAY 2022 to 14 JUL 2022

### TAKEOFF MINIMUMS

Rwy 17, 23, 35: NA-ATC.

Rwy 5: 300-1 with minimum climb of 325' per NM to 1500 or standard with minimum climb of 540' per NM to 800.

NOTE: Chart not to scale.



### DEPARTURE ROUTE DESCRIPTION

**TAKEOFF RUNWAY 5:** Climbing left turn to 5000 on heading 360° and CKH VORTAC R-075 to BLUSH INT/CKH 58 DME.

BLUSH TWO DEPARTURE  
(BLUSH2.BLUSH) 29MAY14

KAUNAKAKAI, HAWAII  
MOLOKAI (MKK) (PHMK)