
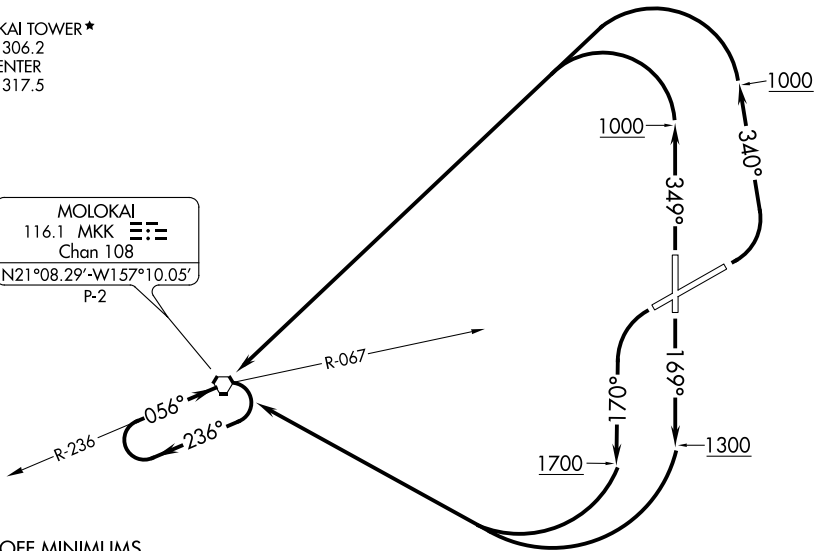


ATIS
128.2
GND CON
121.9
MOLOKAI TOWER*
125.7 306.2
HCF CENTER
124.1 317.5

MOLOKAI
116.1 MKK 
Chan 108
N21°08.29'-W157°10.05'
P-2



TAKEOFF MINIMUMS

- Rwy 17: Standard.
- Rwy 5: 300-1 with minimum climb of 325' per NM to 1500 or standard with minimum climb of 540' per NM to 800 or 1500-2 1/2 for climb in visual conditions.
- Rwy 35: 300-1 or standard with minimum climb of 535' per NM to 800.
- Rwy 23: Standard with minimum climb of 435' per NM to 1500 or 1500-2 1/2 for climb in visual conditions.

(NOTES CONTINUED ON FOLLOWING PAGE)

NOTE: Chart not to scale.

DEPARTURE ROUTE DESCRIPTION

TAKEOFF RUNWAY 5: Climbing left turn heading 340° to 1000 then climbing left turn direct MKK VORTAC, thence. . . .

TAKEOFF RUNWAY 17: Climb heading 169° to 1300 then climbing right turn direct MKK VORTAC, thence. . . .

TAKEOFF RUNWAY 23: Climbing left turn heading 170° to 1700 then climbing right turn direct MKK VORTAC, thence. . . .

TAKEOFF RUNWAY 35: Climb heading 349° to 1000 then climbing left turn direct MKK VORTAC, thence. . . .

VCOA RUNWAYS 5 and 23: Obtain ATC approval for VCOA when requesting IFR clearance. Climb in visual conditions to cross Molokai Airport southwest bound at or above 1800 on MKK R-067 to MKK VORTAC, thence. . . .

. . . .climb in MKK VORTAC hold pattern to cross MKK at or above MEA/MCA for route of flight.