

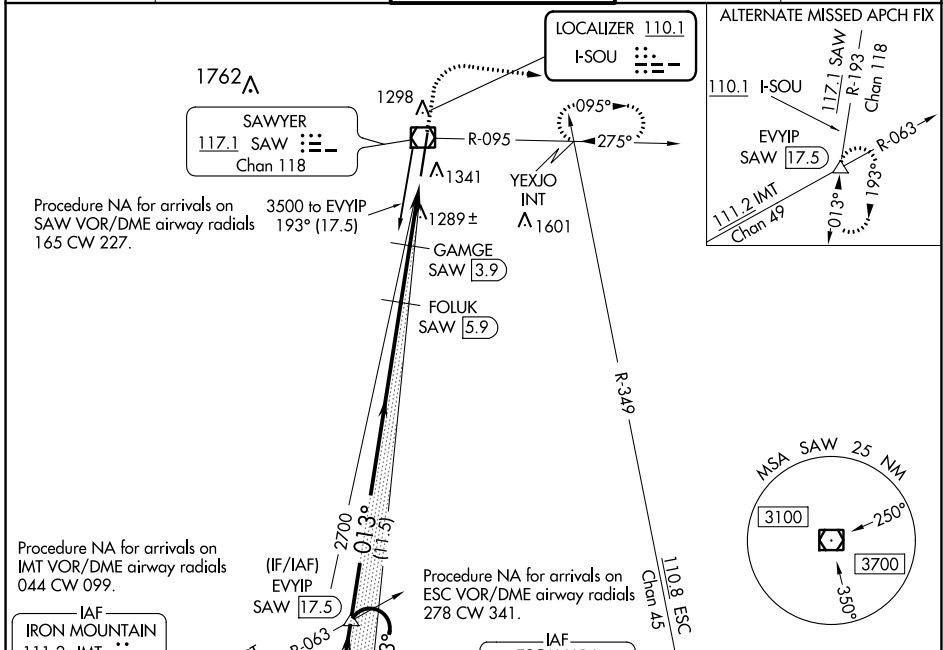
LOC I-SOU 110.1	APP CRS 013°	Rwy Idg 9072	TDZE 1180
		Apt Elev 1204	

ILS or LOC RWY 1

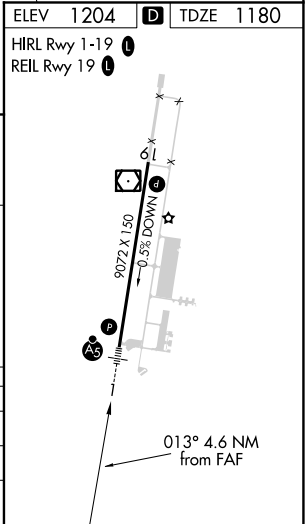
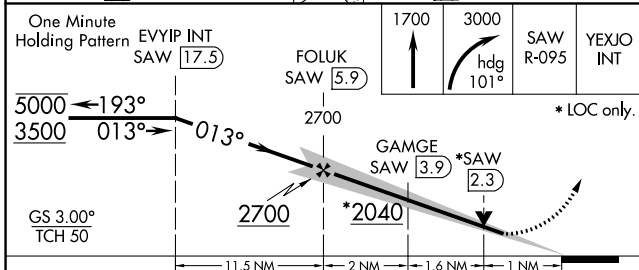
SAWYER INTL (SAW)

DME required for LOC only.		MALS R	MISSED APPROACH: Climb to 1700 then climbing right turn to 3000 on heading 101° and on SAW VOR/DME R-095 to YEXJO INT and hold.
Autopilot coupled approach NA below 1360 MSL.		AS	

AWOS-3 118.375	MINNEAPOLIS CENTER 119.1 290.2	SAWYER TOWER ★ 119.975 (CTAF)	GND CON 121.65	UNICOM 122.7
--------------------------	--	---	--------------------------	------------------------



ELEV 1204	TDZE 1180
HIRL Rwy 1-19	REIL Rwy 19



CATEGORY	A	B	C	D
S-ILS 1	1380-½		200 (200-½)	
S-LOC 1	1580-½	400 (400-½)	1580-⅝	400 (400-⅝)
CIRCLING	1680-1	476 (500-1)	1820-1¾ 616 (700-1¾)	1820-2 616 (700-2)

EC-1, 19 MAY 2022 to 16 JUN 2022

EC-1, 19 MAY 2022 to 16 JUN 2022