

WAAS CH <b>86410</b> <b>W30A</b>	APP CRS <b>300°</b>	Rwy Idg TDZE Apt Elev	<b>6000</b> <b>549</b> <b>549</b>
--	------------------------	-----------------------------	---

# RNAV (GPS) RWY 30

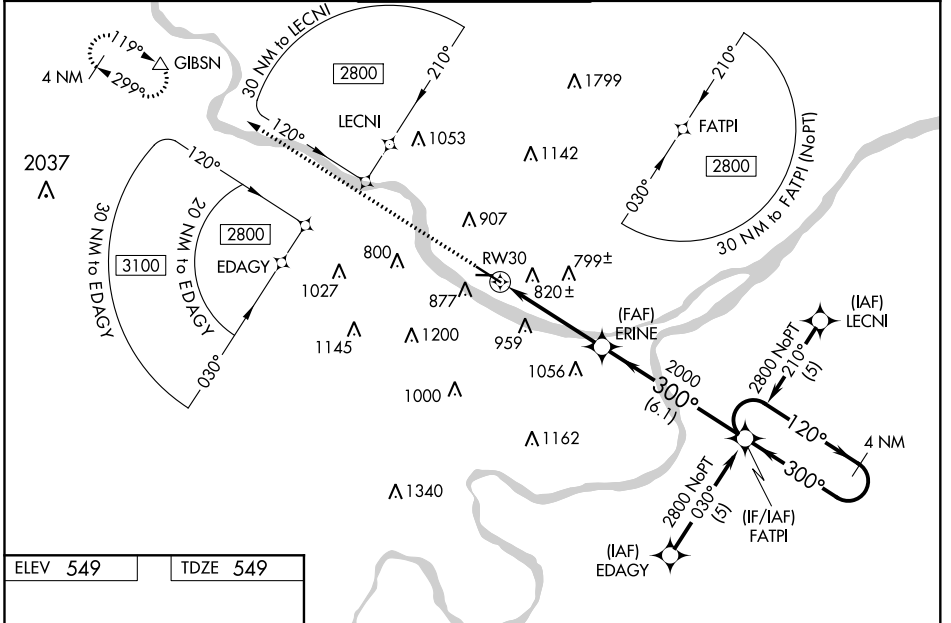
JEFFERSON CITY MEML (JEF)

**⚠** For uncompensated Baro-VNAV systems, LNAV/VNAV NA below -16°C (4°F) or above 47°C (116°F). DME/DME RNP-0.3 NA.  
**⚠** When local altimeter setting not received, use Columbia Rgnl altimeter setting and increase all DA/MDA 80 feet; increase LPV all Cats, LNAV/VNAV all Cats, LNAV Cats B, C, and D, and Circling Cats A, B and C visibility ¼ SM. For operative MALSR, when using Columbia Rgnl altimeter setting increase LPV all Cats visibility to 1¼. Baro-VNAV and VDP NA when using Columbia Rgnl altimeter setting. Circling Rwy 9 NA at night.

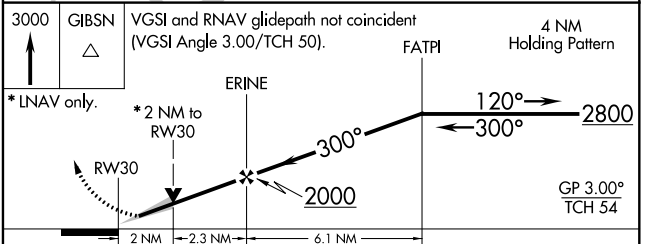
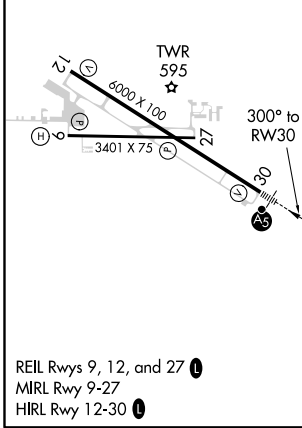
MALSR

MISSED APPROACH: Climb to 3000 direct GIBSN and hold.

ASOS <b>133.625</b>	MIZZU APP CON <b>124.375 353.925</b>	JEFFERSON CITY TOWER * <b>125.6</b> (CTAF) <b>0</b>	GND CON <b>121.7</b>	UNICOM <b>122.95</b>
------------------------	---	--	-------------------------	-------------------------



ELEV <b>549</b>	TDZE <b>549</b>
-----------------	-----------------



CATEGORY	A	B	C	D
LPV DA		799-½	250 (300-½)	
LNAV/VNAV DA		1322-2¼	773 (800-2¼)	
LNAV MDA	1240-½	691 (700-½)	1240-1½	1240-1¾
	771 (800-1)	771 (800-1¼)	691 (700-½)	691 (700-1¾)
<b>C</b> CIRCLING	1320-1	1320-1¼	1320-2¼	1560-3
	771 (800-1)	771 (800-1¼)	771 (800-2¼)	1011 (1100-3)

NC-3, 19 MAY 2022 to 16 JUN 2022

NC-3, 19 MAY 2022 to 16 JUN 2022