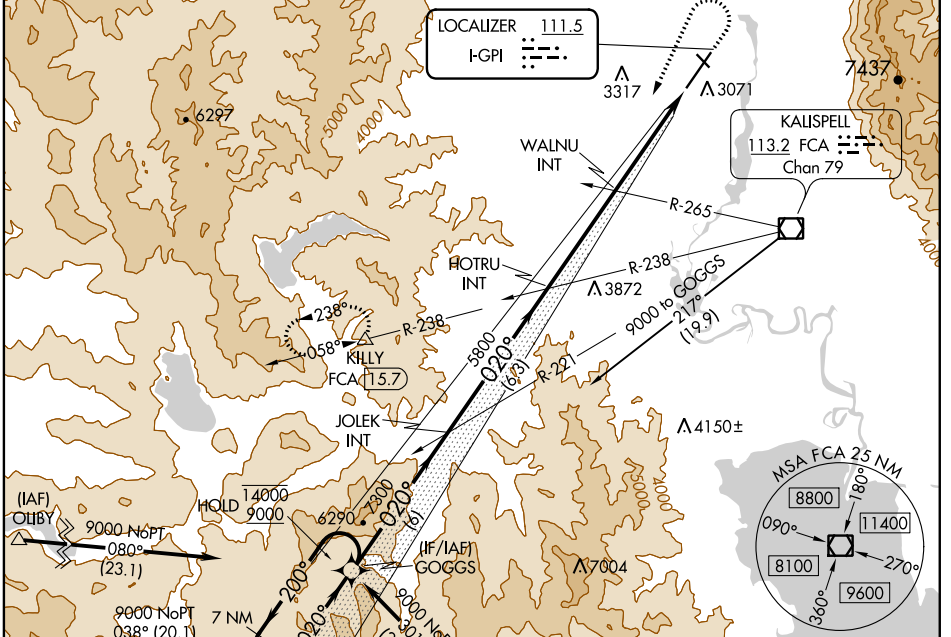


LOC I-GPI 111.5	APP CRS 020°	Rwy Idg 9007
		TDZE 2966
		Apt Elev 2977

ILS or LOC RWY 2

GLACIER PARK INTL (GPI)

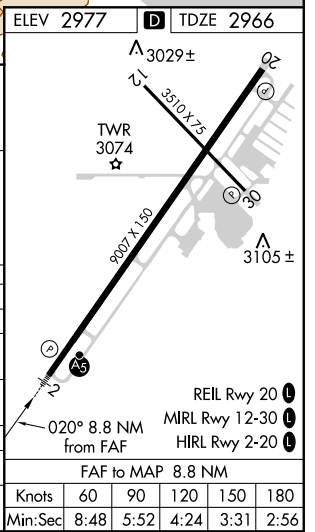
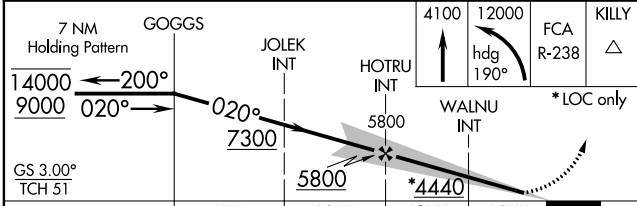
DME required. RNAV 1-GPS or RADAR required for procedure entry.		MALSR	MISSED APPROACH: Climb to 4100 then climbing left turn to 12000 on heading 190° and FCA VOR/DME R-238 to KILLY/15.7 DME and hold, continue climb-in-hold to 12000.	
Inop table does not apply to S-LOC 2 Cats C/D.				
-15°C				
ATIS 132.625	SALT LAKE CENTER 133.4 285.4	GLACIER TOWER* 124.55 (CTAF)	GND CON 121.6	UNICOM 122.95



NW-1, 19 MAY 2022 to 16 JUN 2022

NW-1, 19 MAY 2022 to 16 JUN 2022

ELEV 2977	TDZE 2966
-----------	-----------



CATEGORY	A	B	C	D
S-ILS 2	3166-1/2 200 (200-1/2)			
S-LOC 2	4440-3/4 1474 (1500-3/4)	4440-1 1474 (1500-1)	4440-3	1474 (1500-3)
CIRCLING	4440-1 1/4 1463 (1500-1 1/4)	4440-1 1/2 1463 (1500-1 1/2)	4440-3	1463 (1500-3)
WALNU FIX MINIMUMS (DUAL VOR RECEIVERS REQUIRED)				
S-LOC 2	3520-1/2	554 (600-1/2)	3520-1 1/8	554 (600-1 1/8)
CIRCLING	3520-1 543 (600-1)	3580-1 603 (700-1)	3640-1 3/4 663 (700-3/4)	3760-2 1/2 783 (800-2 1/2)

Knots	60	90	120	150	180
Min:Sec	8:48	5:52	4:24	3:31	2:56