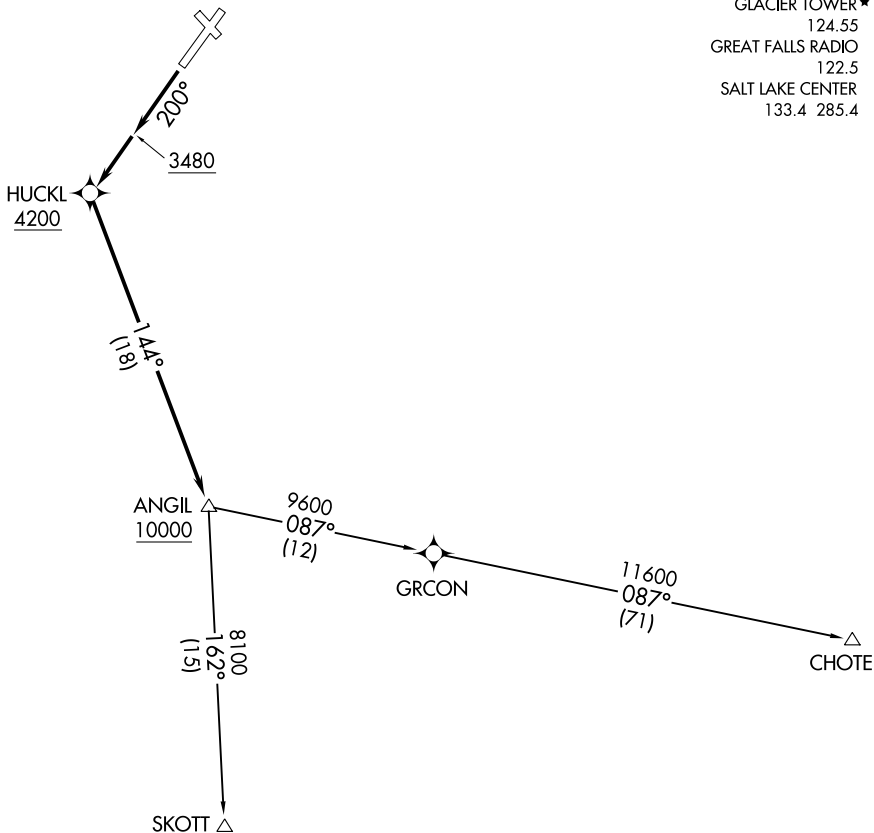


**TOP ALTITUDE:  
ASSIGNED BY ATC**

- ATIS 132.625
- GND CON 121.6
- GLACIER TOWER ★ 124.55
- GREAT FALLS RADIO 122.5
- SALT LAKE CENTER 133.4 285.4



NW-1, 19 MAY 2022 to 16 JUN 2022

NW-1, 19 MAY 2022 to 16 JUN 2022

NOTE: GPS required.  
 NOTE: RNAV 1.  
 NOTE: Chart not to scale.

TAKEOFF MINIMUMS  
 Rwy 2, 12, 30: NA - ATC.  
 Rwy 20: Standard with minimum climb of 500' per NM to 3480.

**DEPARTURE ROUTE DESCRIPTION**

TAKEOFF RUNWAY 20: Climb heading 200° to 3480, then climb direct to cross HUCKL at or above 4200, then on track 144° to cross ANGIL at or above 10000, thence. . . .

. . . .on (transition). Maintain ATC assigned altitude. Expect filed altitude five minutes after departure.

CHOTE TRANSITION (GPI1.CHOTE)

SKOTT TRANSITION (GPI1.SKOTT)