

NW-1, 19 MAY 2022 to 16 JUN 2022

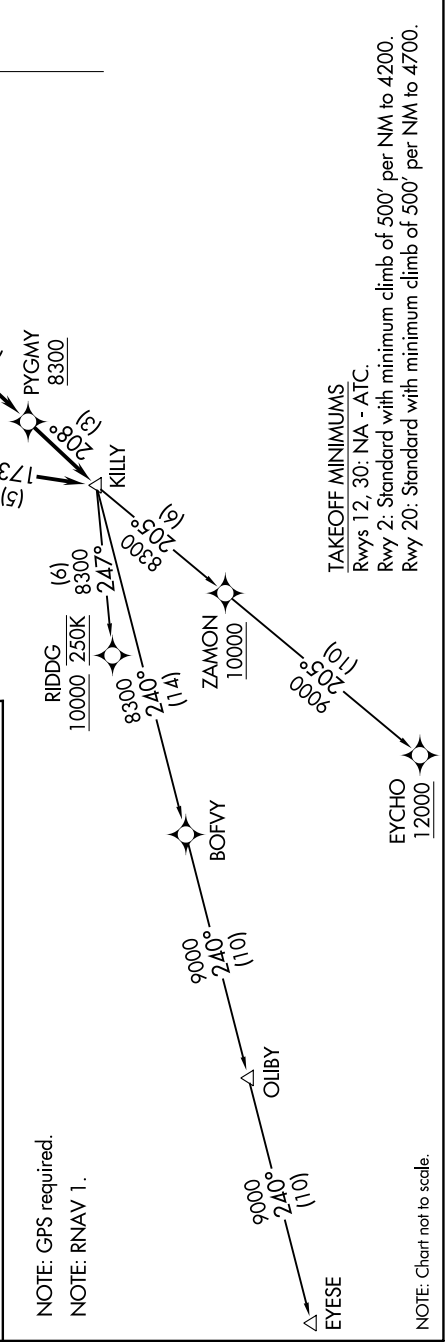
DEPARTURE ROUTE DESCRIPTION

TAKEOFF RUNWAY 2: Climb heading 020° to intercept course 290° to cross KECEK at or above 7000 and at or below 230K, then on track 216° to cross EEVEL at or above 9000, then on track 167° to KNEVL, then on track 173° to KILLY, thence

TAKEOFF RUNWAY 20: Climb heading 200° to 3480, then climbing right turn direct to cross DAAACE at or above 6300, then on track 208° to cross PYGMY at or above 8300, then on track 208° to KILLY, thence

. . . . on (transition). Maintain ATC assigned altitude. Expect filed altitude five minutes after departure.

EYCHO TRANSITION (KILLY1.EYCHO)
EYESE TRANSITION (KILLY1.EYESE)
RIDDG TRANSITION (KILLY1.RIDDG)



NW-1, 19 MAY 2022 to 16 JUN 2022