

LOC I-SFM <b>111.5</b>	APP CRS <b>075°</b>	Rwy Idg <b>6389</b> TDZE <b>241</b> Apt Elev <b>244</b>
---------------------------	------------------------	---

# ILS or LOC RWY 7

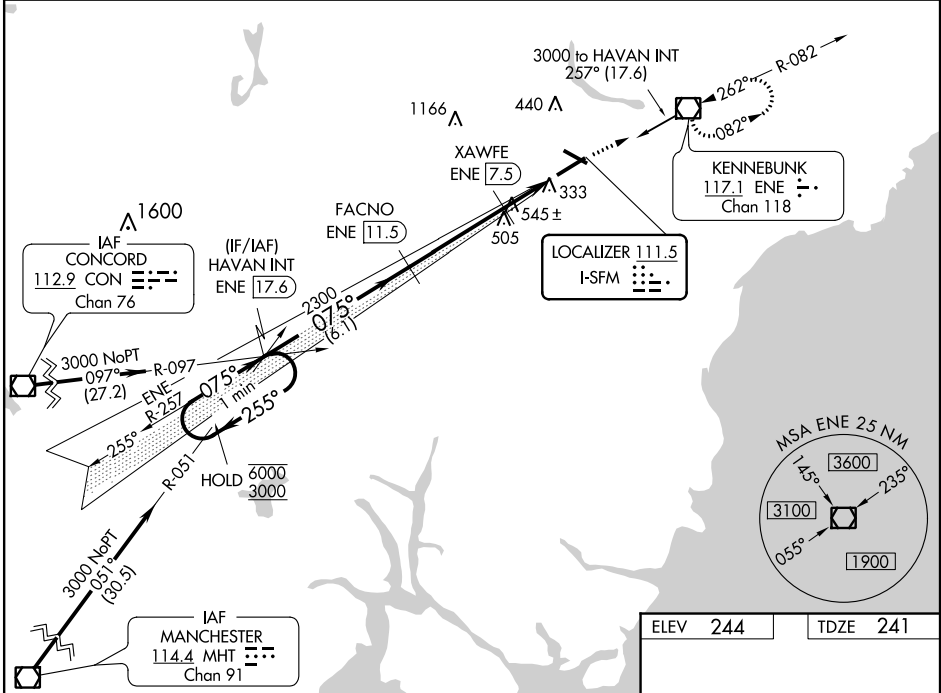
SANFORD SEACOAST RGNL (SFM)

DME required for LOC only.

**▽** Rwy 7 helicopter visibility reduction below 3/4 SM NA.  
**▲ NA** DME from ENE VOR/DME.  
Simultaneous reception of I-SFM and ENE DME required.

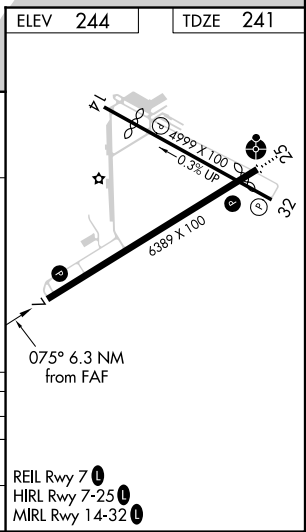
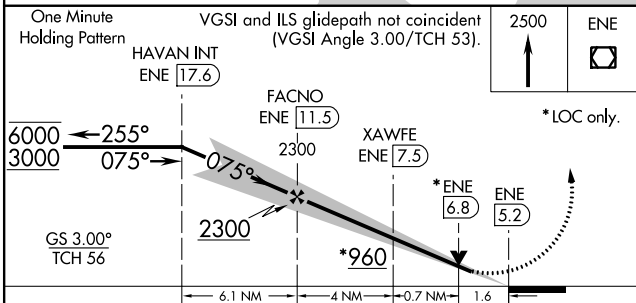
MISSED APPROACH: Climb to 2500 direct ENE VOR/DME and hold, continue climb-in-hold to 2500.

AWOS-3PT <b>120.025</b>	PORTLAND APP CON * <b>119.75 269.35</b>	CLNC DEL <b>121.725</b>	UNICOM <b>123.075 (CTAF) 0</b>
----------------------------	--	----------------------------	-----------------------------------



NE-1, 19 MAY 2022 to 16 JUN 2022

NE-1, 19 MAY 2022 to 16 JUN 2022



CATEGORY	A	B	C	D
S-ILS 7	441-3/4 200 (200-3/4)			
S-LOC 7	800-1	559 (600-1)	800-1 5/8	559 (600-1 5/8)
<b>C</b> CIRCLING	800-1	556 (600-1)	1180-2 3/4 936 (1000-2 3/4)	1240-3 996 (1000-3)