

WAAS CH 86921 W07A	APP CRS 075°	Rwy Idg TDZE 241 Apt Elev 244	6389
---------------------------------	------------------------	---	-------------

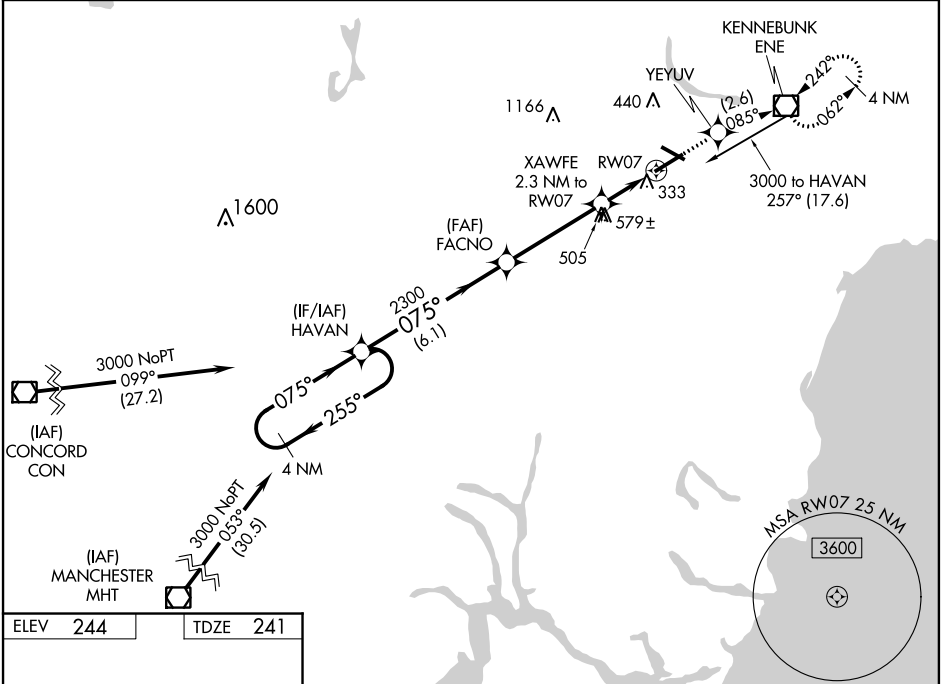
RNAV (GPS) RWY 7

SANFORD SEACOAST RGNL (SFM)

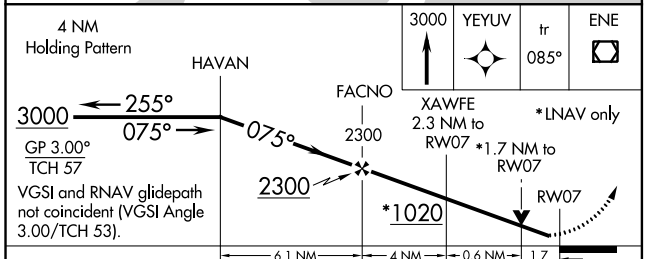
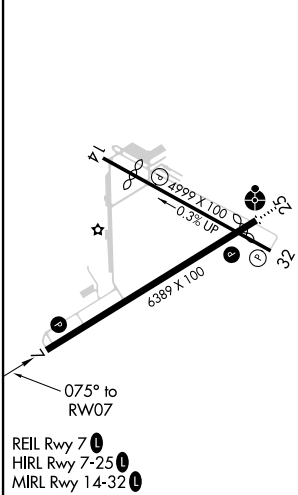
For uncompensated Baro-VNAV systems, LNAV/VNAV NA below -15°C (5°F) or above 54°C (130°F). Helicopter visibility reduction below 3/4 SM NA. DME/DME RNP-0.3 NA. Baro-VNAV and VDP NA when using Rochester, NH altimeter setting. When local altimeter setting not received, use Rochester, NH altimeter setting: increase LPV DA to 479; increase LNAV/VNAV DA to 699 and visibility all Cats 1/8 SM, increase all MDA 40 feet, and Circling Cat C visibility 1/4 SM.

MISSED APPROACH: Climb to 3000 direct YEVUV and on track 085° to ENE VOR/DME and hold, continue climb-in-hold to 3000.

AWOS-3PT 120.025	PORTLAND APP CON* 119.75 269.35	CLNC DEL 121.725	UNICOM 123.075 (CTAF)
----------------------------	---	----------------------------	---------------------------------



ELEV 244	TDZE 241
----------	----------



CATEGORY	A	B	C	D
LPV DA		441-3/4	200 (200-3/4)	
LNAV/VNAV DA		650-1 3/8	409 (500-1 3/8)	
LNAV MDA	840-1	599 (600-1)	840-1 3/4	599 (600-1 3/4)
CIRCLING	840-1	596 (600-1)	1180-2 3/4 936 (1000-2 3/4)	1240-3 996 (1000-3)

NE-1, 19 MAY 2022 to 16 JUN 2022

NE-1, 19 MAY 2022 to 16 JUN 2022