

|  |                        |   |
|--|------------------------|---|
| WAAS<br>CH <b>53417</b><br><b>W35A</b> | APP CRS<br><b>353°</b> | Rwy Idg<br>TDZE <b>1561</b><br>Apt Elev <b>1563</b> |
|--|------------------------|---|

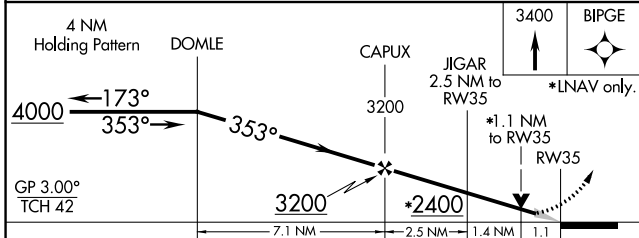
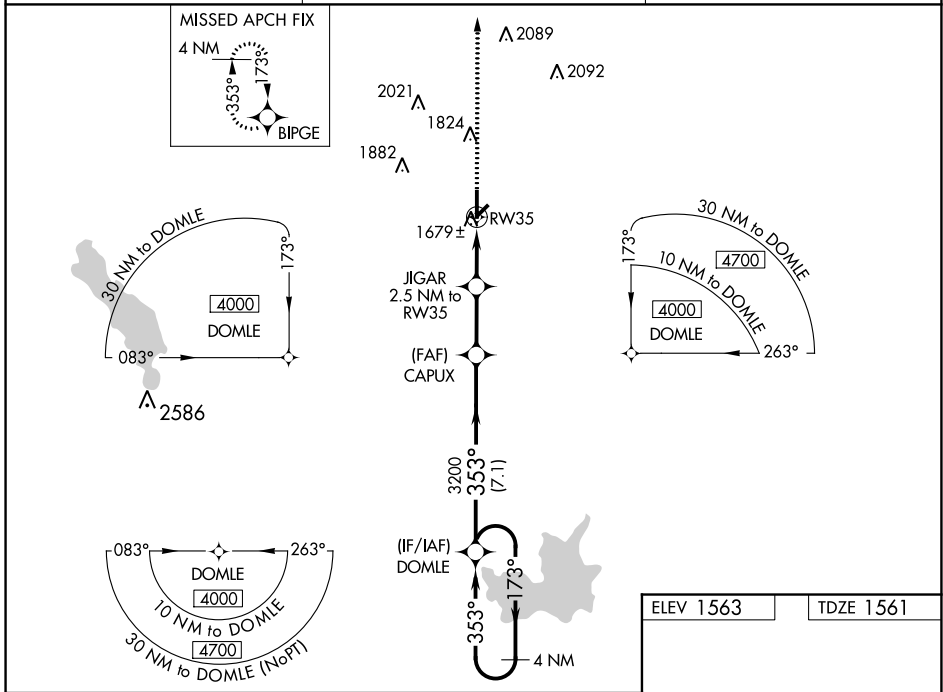
# RNAV (GPS) RWY 35

HOBART RGNL (HBR)

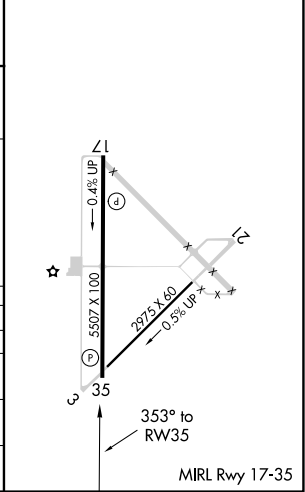
⚠ For uncompensated Baro-VNAV systems, LNAV/VNAV NA below -18°C (0°F) or above 45°C (113°F). DME/DME RNP-0.3 NA. When local altimeter setting not received, use Altus/Quartz Mountain Rgnl altimeter setting and increase LPV DA to 1882 feet and visibility all Cats ¼ SM; increase all MDA 80 feet and Circling Cat C visibility ¼ SM. Baro-VNAV NA when using Altus/Quartz Mountain Rgnl altimeter setting. VDP NA with Altus/Quartz Mountain Rgnl altimeter setting.

MISSED APPROACH: Climb to 3400 direct BIPGE and hold.

|                        |                                      |                               |
|------------------------|--------------------------------------|-------------------------------|
| ASOS<br><b>133.325</b> | ALTUS APP CON★<br><b>125.1 353.7</b> | UNICOM<br><b>122.8</b> (CTAF) |
|------------------------|--------------------------------------|-------------------------------|



|           |           |
|-----------|-----------|
| ELEV 1563 | TDZE 1561 |
|-----------|-----------|



| CATEGORY     | A                     | B                     | C                       | D                     |
|--------------|-----------------------|-----------------------|-------------------------|-----------------------|
| LPV DA       | 1811-1                |                       | 250 (300-1)             |                       |
| LNAV/VNAV DA | 1949-1¼               |                       | 388 (400-1¼)            |                       |
| LNAV MDA     | 1940-1                | 379 (400-1)           | 1940-1½<br>379 (400-1½) | 1940-2<br>379 (400-2) |
| CIRCLING     | 1980-1<br>417 (500-1) | 2020-1<br>457 (500-1) | 2320-2¼<br>757 (800-2¼) | 2460-3<br>897 (900-3) |

SC-1, 19 MAY 2022 to 16 JUN 2022

SC-1, 19 MAY 2022 to 16 JUN 2022