

RIDGECREST, CALIFORNIA

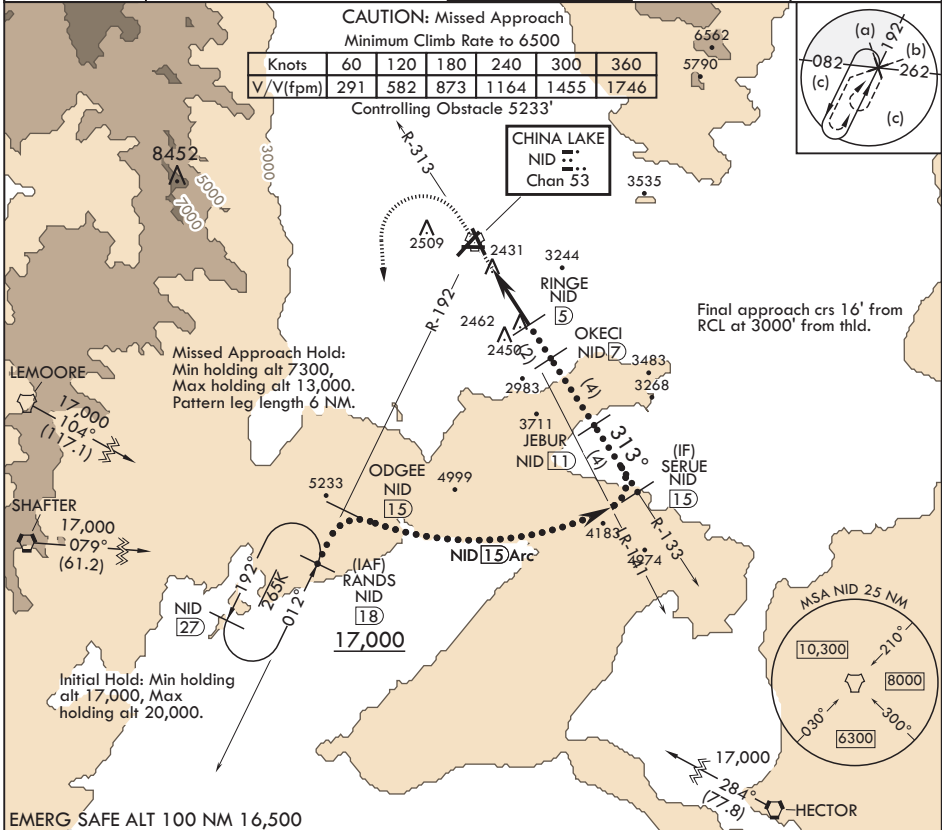
HI-TACAN RWY 32

TACAN NID Chan 53	APCH CRS 313°	Rwy ldg TDZE 2241 Arprt Elev 2284
-------------------	---------------	--------------------------------------

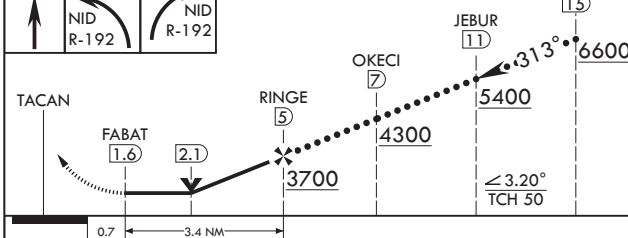
AL-914 (USN) CHINA LAKE NAWS (ARMITAGE FLD) (KNID)

<p>MISSED APPROACH: Climb to 3600 then a climbing left turn to 7300 to intercept China Lake TACAN R-192 to RANDS and hold.</p>	
---	--

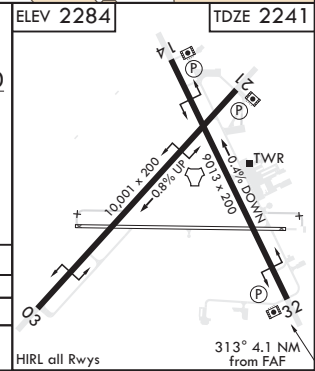
ATIS★ 322.375	JOSHUA APP CON/DEP CON 133.65 348.7	TOWER★ 120.15 340.2	GND CON 360.2	CLNC DEL 274.7
-------------------------	---	-------------------------------	-------------------------	--------------------------



3600	7300	TDZE 2241
------	------	-----------



CATEGORY	C	D	E
S-32	2720-1½	479	(500-1½)
CIRCLING	2820-1½ 536 (600-1½)	3500-3 1216 (1300-3)	NA



RIDGECREST, CALIFORNIA 35°41'N - 117°42'W CHINA LAKE NAWS (ARMITAGE FLD) (KNID)

Amdt 5 10SEP20

HI-TACAN RWY 32

SW-3, 19 MAY 2022 to 16 JUN 2022

SW-3, 19 MAY 2022 to 16 JUN 2022