

HI-TACAN Z RWY 03

TACAN NID Chan 53	APCH CRS 034°	Rwy Idg 10,001
		TDZE 2284
		Arpt Elev 2284

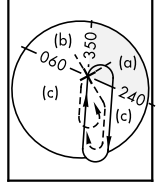
[UN] AL-914 (CIV) CHINA LAKE NAWA (ARMITAGE FLD) (KNID)

MISSED APPROACH: Climb to 3600 then climbing right turn to 9500, intercept NID TACAN R-170 to FONOD and hold. Minimum climb gradient 370 ft/NM to 9500.

ATIS ★ 322.375	JOSHUA APP/DEP CON 133.65 348.7	TOWER ★ 120.15 340.2	GND CON 360.2	CLNC DEL 274.7
-------------------	------------------------------------	-------------------------	------------------	-------------------

CAUTION: Short intermediate segment (4 NM), recommend early configuration.

CAUTION: Descent gradient CISUN to IDALE 333 ft/NM. Descent gradient from IDALE to HAMEN 440 ft/NM.

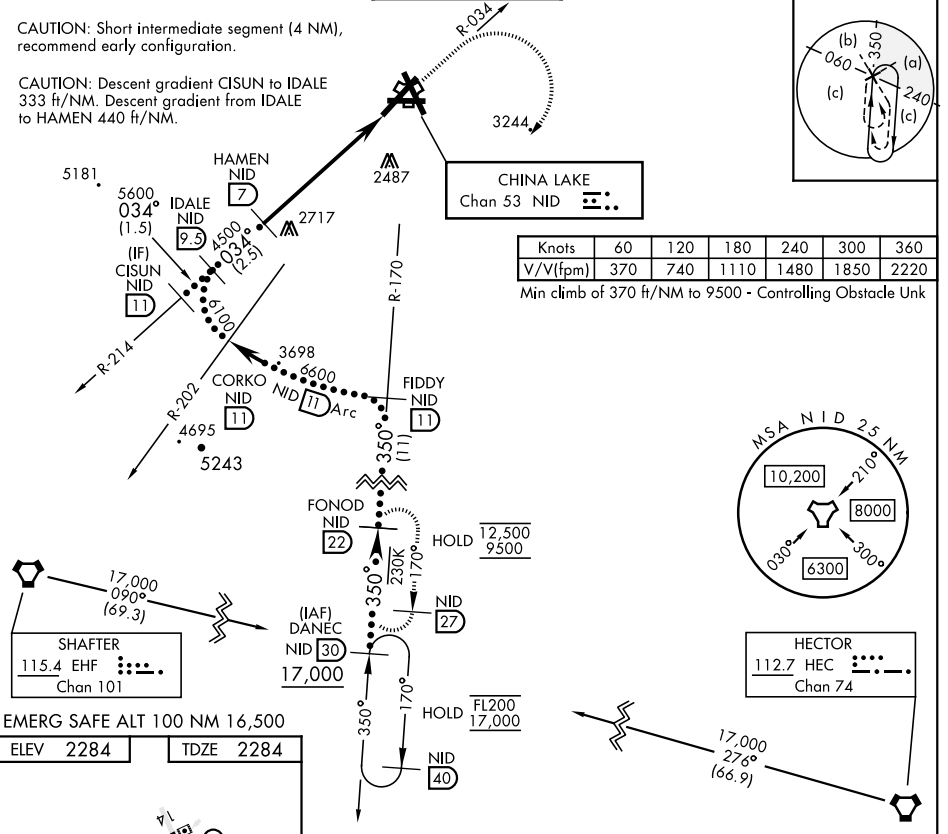


Knots	60	120	180	240	300	360
V/V(fpm)	370	740	1110	1480	1850	2220

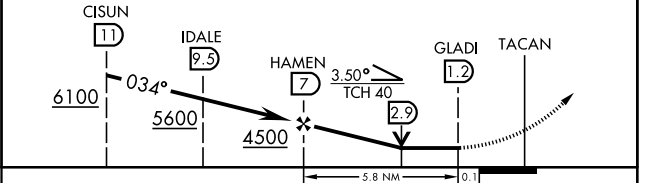
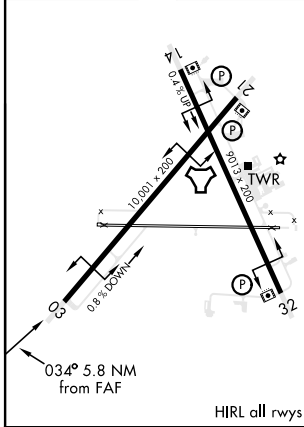
Min climb of 370 ft/NM to 9500 - Controlling Obstacle Unk

SW-3, 19 MAY 2022 to 16 JUN 2022

SW-3, 19 MAY 2022 to 16 JUN 2022



EMERG SAFE ALT 100 NM 16,500
ELEV 2284 TDZE 2284



CATEGORY	C	D	E
S-03	2980-2	696 (700-2)	
C CIRCLING	2980-2 696 (700-2)	3560-3 1276 (1300-3)	NOT AUTHORIZED

HI-TACAN Z RWY 03