

RIDGECREST, CALIFORNIA

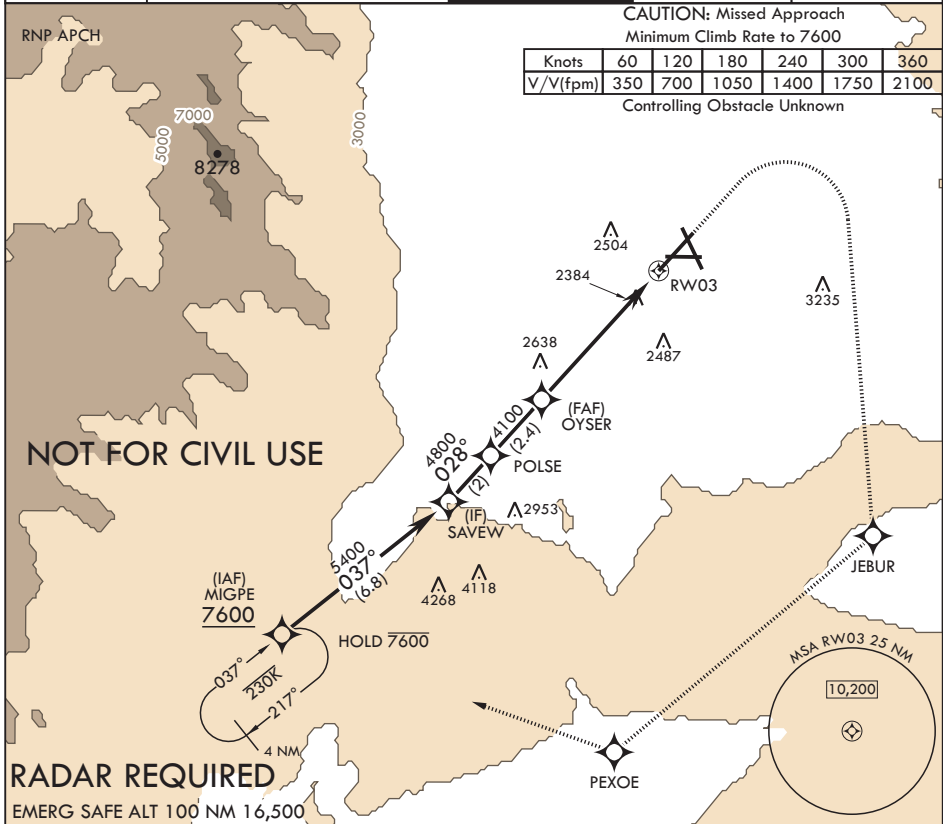
RNAV (GPS) RWY 03

APCH CRS 028°	Rwy Idg TDZE Arprt Elev	10,001 2284 2284
-------------------------	-------------------------------	---

AL-914 (USN) CHINA LAKE NAWS (ARMITAGE FLD) (KNID)

MISSED APPROACH: (Do not exceed 185 KIAS until initial turn completion.) Climb to 3600 then climbing right turn to 7600 direct JEBUR, track 216° to PEXOE, track 275° to MIGPE and hold. Missed Approach requires a minimum climb of 350 ft per NM to 7600.

ATIS★ 322.375	JOSHUA APP CON/DEP CON 133.65 348.7	TOWER★ 120.15 340.2	GND CON 360.2	CLNC DEL 274.7
-------------------------	---	-------------------------------	-------------------------	--------------------------



CAUTION: Missed Approach
Minimum Climb Rate to 7600

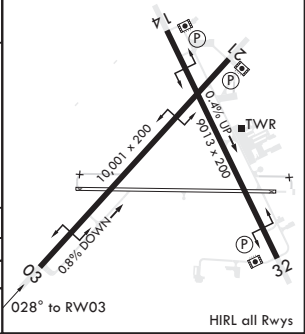
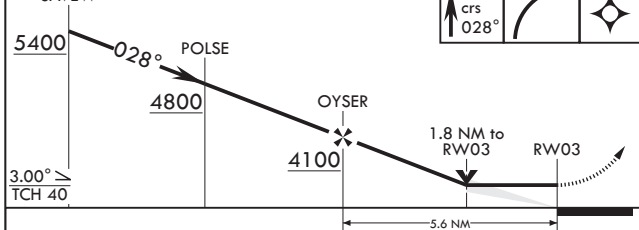
Knots	60	120	180	240	300	360
V/V(fpm)	350	700	1050	1400	1750	2100

Controlling Obstacle Unknown

SW-3, 19 MAY 2022 to 16 JUN 2022

SW-3, 19 MAY 2022 to 16 JUN 2022

SAVEW	3600	7600	JEBUR	ELEV 2284	TDZE 2284
-------	------	------	-------	-----------	-----------



CATEGORY	A	B	C	D
LNAV MDA	2900-1 616 (700-1)	2900-1¼ 616 (700-1¼)	2900-1¼ 616 (700-1¼)	3560-3 1276 (1300-3)
CIRCLING	2900-1 616 (700-1)			

RIDGECREST, CALIFORNIA

35°41'N - 117°42'W

CHINA LAKE NAWS (ARMITAGE FLD) (KNID)

Orig 12AUG21
TERPS

RNAV (GPS) RWY 03