

RIDGECREST, CALIFORNIA

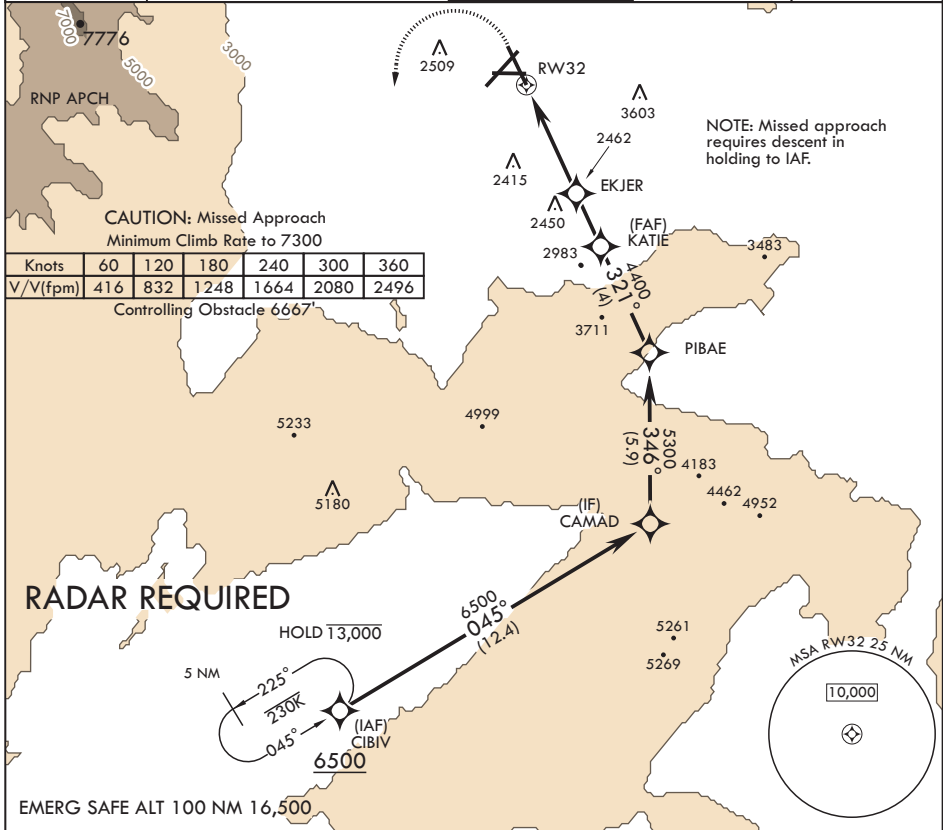
RNAV (GPS) RWY 32

APCH CRS 321°	Rwy Idg 9013
	TDZE 2241
	Arprt Elev 2284

AL-914 (USN) CHINA LAKE NAWS (ARMITAGE FLD) (KNID)

MISSED APPROACH: Climb to 2800 then climbing left turn to 8100 direct CIBIV and hold, continue climb-in-hold to 8100.

ATIS★ 322.375	JOSHUA APP CON/DEP CON 133.65 348.7	TOWER★ 120.15 340.2	GND CON 360.2	CLNC DEL 274.7
-------------------------	---	-------------------------------	-------------------------	--------------------------



2800	8100	CIBIV	ELEV 2284	TDZE 2241
crs 321°				
CATEGORY	A	B	C	D
LNAV MDA	2660-1 419 (400-1)	2660-1½ 419 (400-1½)	2820-1½ 419 (400-1½)	3520-3 1236 (1300-3)
CIRCLING	2740-1 456 (500-1)	2820-1 536 (600-1)	2820-1½ 536 (600-1½)	3520-3 1236 (1300-3)
HIRL all Rwys 321° to RWY 32				

RIDGECREST, CALIFORNIA

35°41'N - 117°42'W

CHINA LAKE NAWS (ARMITAGE FLD) (KNID)

Amdt 5 10SEP20

RNAV (GPS) RWY 32

SW-3, 19 MAY 2022 to 16 JUN 2022

SW-3, 19 MAY 2022 to 16 JUN 2022