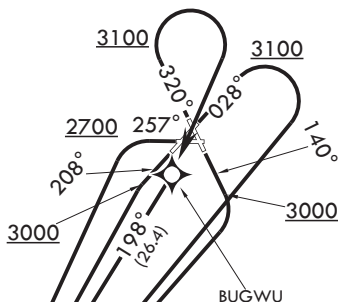


ATIS * 322.375
 CLNC DEL 274.7
 GND CON 360.2
 TOWER * 120.15 340.2
 JOSHUA APP CON/DEP CON
 133.65 348.7

8484



ZUDID

OLRAE

ROSIE
8000

JARIS

FILLMORE
FIM

L 3-4, L-7, H-4

Rwy	Knots	60	120	180	240	300	360
3	V/V(fpm)	228	456	684	912	1140	1368
14	V/V(fpm)	257	514	771	1028	1285	1542
21	V/V(fpm)	286	572	858	1144	1430	1716
26	V/V(fpm)	267	534	801	1068	1335	1602
32	V/V(fpm)	212	424	636	848	1060	1272

Minimum Climb Rate to 6200

SW-3, 19 MAY 2022 to 16 JUN 2022

SW-3, 19 MAY 2022 to 16 JUN 2022



DEPARTURE ROUTE DESCRIPTION

TAKE-OFF RWY 3: Climb heading 028° to 3100, then climbing right turn direct ZUDID. Thence...

TAKE-OFF RWY 14: Climb heading 140° to 3000, then climbing right turn direct ZUDID. Thence...

TAKE-OFF RWY 21: Climb heading 208° to 3000, then climbing left turn direct ZUDID. Thence...

TAKE-OFF RWY 26: Climb heading 257° to 2700, then climbing left turn direct ZUDID. Thence...

TAKE-OFF RWY 32: Climb heading 320° to 3100, then climbing right turn direct BUGWU, then direct ZUDID. Thence...

...from over ZUDID proceed via depicted route to FILLMORE VORTAC. Cross ROSIE at or above 8000 or as assigned.