

SALTD SEVEN DEPARTURE (SALTD7•SALTD)

CHINA LAKE NAWES (ARMITAGE FLD) (KNID)

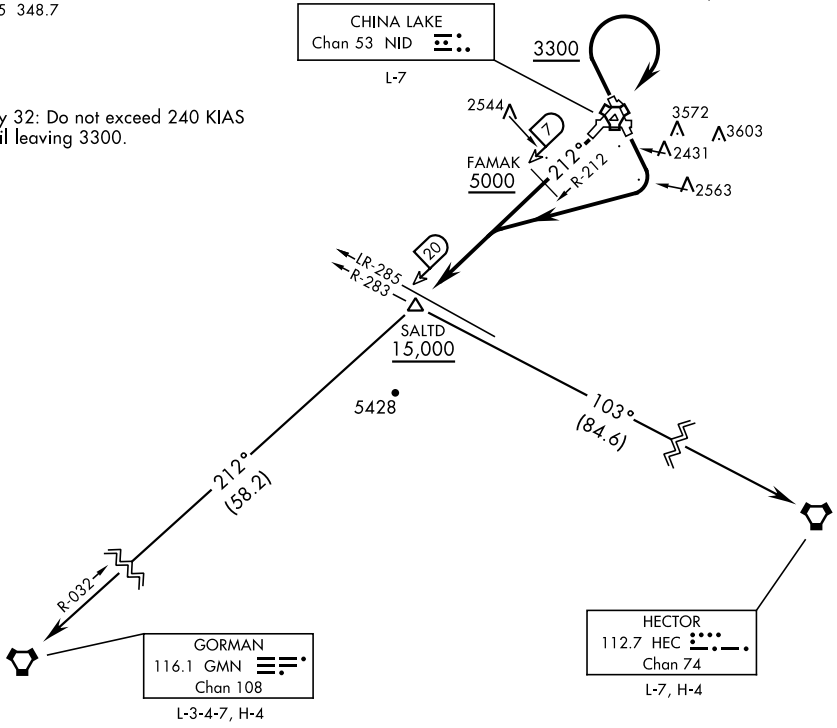
SHL-914 [USN] RIDGECREST, CALIFORNIA

ATIS ★ 322.375
 CLNC DEL
 274.7
 GND CON
 360.2
 CHINA LAKE TOWER ★
 120.15 340.2
 JOSHUA DEP CON
 133.65 348.7

Rwy	Knots	60	120	180	240	300	360
*14	V/V(fpm)	266	532	798	1064	1330	1596
†14	V/V(fpm)	620	1240	1860	2480	3100	3720
†21	V/V(fpm)	675	1350	2025	2700	3375	4050
†32	V/V(fpm)	496	992	1488	1984	2480	2976

* Minimum Climb Rate to 6200
 † ATC Climb Rate to 15,000

Rwy 32: Do not exceed 240 KIAS until leaving 3300.



SW-3, 19 MAY 2022 to 16 JUN 2022

SW-3, 19 MAY 2022 to 16 JUN 2022

DEPARTURE ROUTE DESCRIPTION

TAKE-OFF RUNWAY 14: Climbing right turn to intercept NID TACAN R-212, then direct SALTD. From SALTD, proceed via assigned transition or RADAR vectors to join assigned route. Cross SALTD at or above 15,000. Thence...

TAKE-OFF RUNWAY 21: Climb via NID TACAN R-212 to FAMA K, then direct SALTD. From SALTD, proceed via assigned transition or RADAR vectors to join assigned route. Cross FAMA K at or above 5,000 and cross SALTD at or above 15,000. Thence...

TAKE-OFF RUNWAY 32: Climb via NID TACAN R-322 to 3300 then climbing right turn direct NID, then via NID R-212 to FAMA K, then direct SALTD. From SALTD, proceed via assigned transition or RADAR vectors to join assigned route. Cross FAMA K at or above 5000 and cross SALTD at or above 15,000. Thence...

GORMAN TRANSITION (SALTD7•GMN): Via GMN VORTAC R-032 to GMN.

HECTOR TRANSITION (SALTD7•HEC): Via HEC VORTAC R-283 to HEC.

SALTD SEVEN DEPARTURE (SALTD7•SALTD)

RIDGECREST, CALIFORNIA

CHINA LAKE NAWES (ARMITAGE FLD) (KNID)