

RIDGECREST, CALIFORNIA

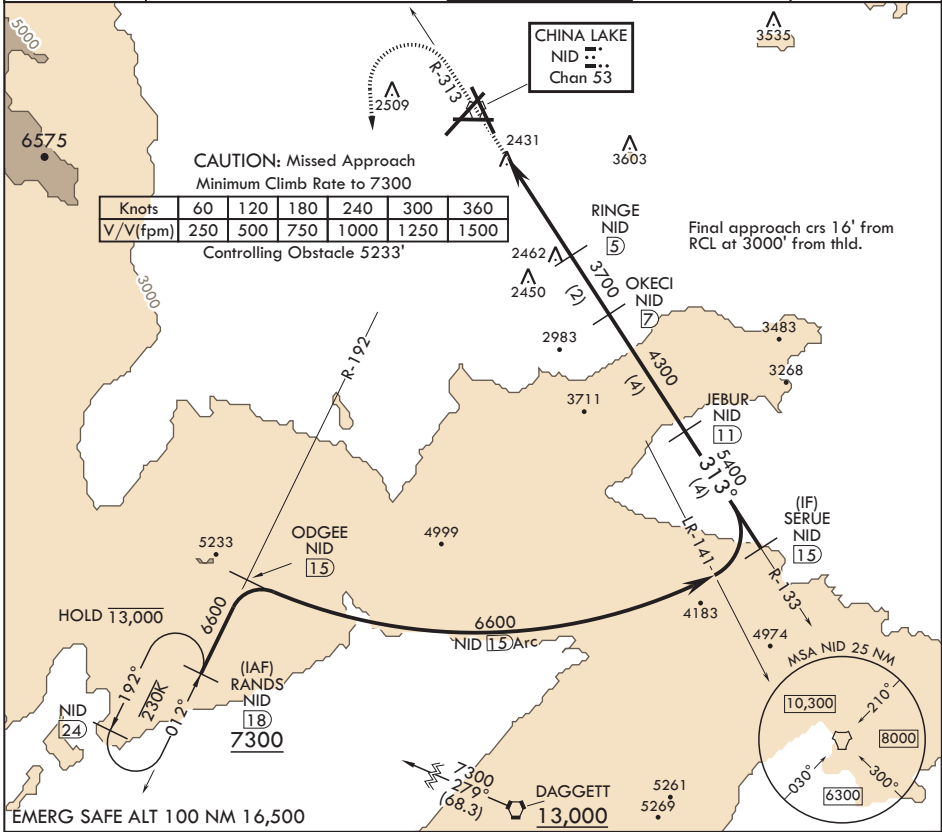
# TACAN RWY 32

TACAN NID Chan 53	APCH CRS 313°	Rwy ldg TDZE Arprt Elev	<b>9013</b> <b>2241</b> <b>2284</b>
----------------------	------------------	----------------------------	---

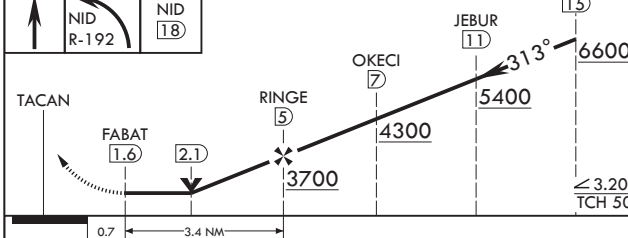
AL-914 (USN) CHINA LAKE NAWS (ARMITAGE FLD) (KNID)

**MISSED APPROACH:** Climb to 3600 then a climbing left turn to 7300 to intercept China Lake TACAN R-192 to RANDES and hold.

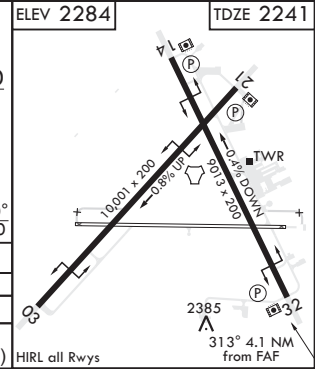
ATIS★ <b>322.375</b>	JOSHUA APP CON/DEP CON <b>133.65 348.7</b>	TOWER★ <b>120.15 340.2</b>	GND CON <b>360.2</b>	CLNC DEL <b>274.7</b>
-------------------------	---	-------------------------------	-------------------------	--------------------------



EMERG SAFE ALT 100 NM 16,500



CATEGORY	A	B	C	D
S-32	2720-1 479 (500-1)	2720-1½ 479 (500-1½)	2720-1¾ 479 (500-1¾)	2720-2 479 (500-2)
CIRCLING	2740-1 456 (500-1)	2820-1 536 (600-1)	2820-1½ 536 (600-1½)	3500-3 1216 (1300-3)



SW-3, 19 MAY 2022 to 16 JUN 2022

SW-3, 19 MAY 2022 to 16 JUN 2022

RIDGECREST, CALIFORNIA

35°41'N - 117°42'W

CHINA LAKE NAWS (ARMITAGE FLD) (KNID)

Amdt 5 10SEP20

# TACAN RWY 32