

TACAN Y RWY 03

TACAN NID Chan 53	APCH CRS 034°	Rwy Idg 10,001 TDZE 2284 Arprt Elev 2284
----------------------	------------------	--

[USN] AL-914 (CIV) CHINA LAKE NAWS (ARMITAGE FLD) (KNID)

RADAR required.

MISSED APPROACH: Climb to 3600 then climbing right turn to 9500 to intercept NID TACAN R-170 to FONOD and hold. Minimum climb gradient 370 to 9500.

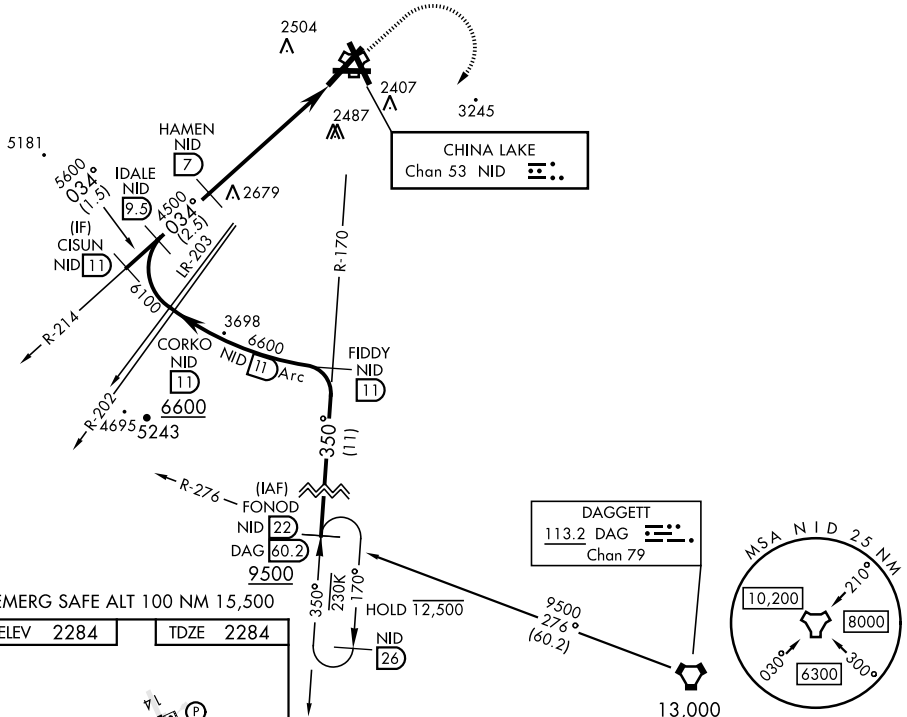
ATIS ★ 322.375	JOSHUA APP/DEP CON 133.65 348.7	TOWER ★ 120.15 340.2	GND CON 360.2	CLNC DEL 274.7
-------------------	------------------------------------	-------------------------	------------------	-------------------

Knots	60	120	180	240	300	360
V/V(fpm)	370	740	1110	1480	1850	2220

Min climb of 370 f/NM to 9500 - Controlling Obstacle Unk

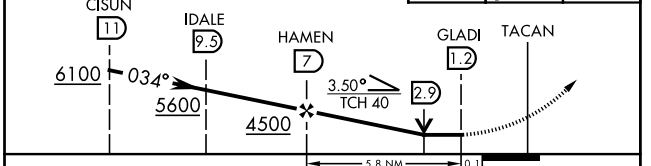
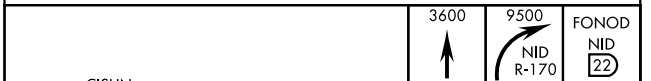
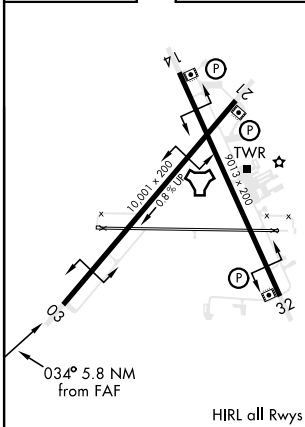
CAUTION: Short Intermediate Segment (4 NM), recommend early configuration.

CAUTION: DG from CISUN to IDALE 333 ft/NM. IDALE to HAMEN 440 ft/NM.



EMERG SAFE ALT 100 NM 15,500

ELEV 2284	TDZE 2284
-----------	-----------



CATEGORY	A	B	C	D
S-03	2980-1	696 (700-1)	2980-2	696 (700-2)
<input checked="" type="checkbox"/> CIRCLING	2980-1	696 (700-1)	2980-2	3560-3
			696 (700-2)	1276 (1300-3)

TACAN Y RWY 03

SW-3, 19 MAY 2022 to 16 JUN 2022

SW-3, 19 MAY 2022 to 16 JUN 2022