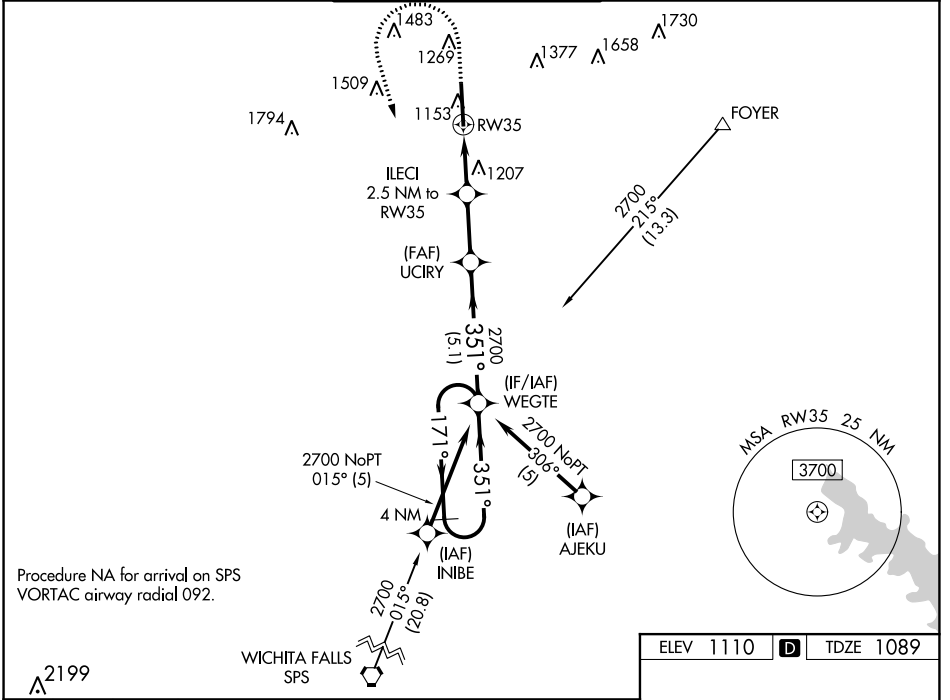


WAAS CH <b>77640</b> <b>W35A</b>	APP CRS <b>351°</b>	Rwy Idg 8599	TDZE 1089
		Apt Elev 1110	

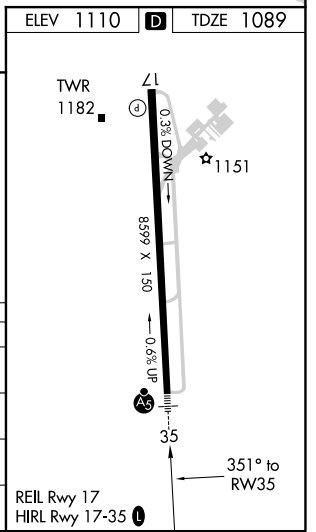
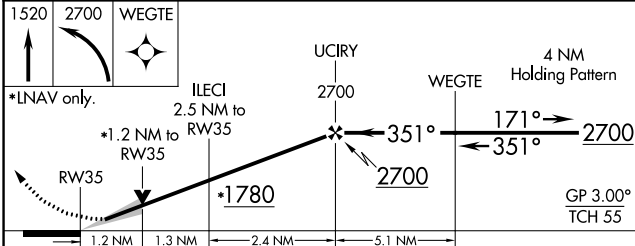
# RNAV (GPS) RWY 35

LAWTON-FORT SILL RGNL (LAW)

RNP APCH.		LAWTON TOWER * <b>119.9 (CTAF) 0 257.8</b>		GND CON <b>121.9</b>	UNICOM <b>122.95</b>
⚠ For uncompensated Baro-VNAV systems, LNAV/VNAV NA below -11°C or above 54°C. For inop ALS, increase LNAV/VNAV all Cats visibility to ½ SM. ⚠ ASR		MALSR 		MISSED APPROACH: (Do not exceed 200K until WEGTE) Climb to 1520 then climbing left turn to 2700 direct WEGTE and hold.	
ATIS <b>120.75</b>	FORT SILL APP CON <b>120.55 322.4</b>				



Procedure NA for arrival on SPS VORTAC airway radial 092.



CATEGORY	A	B	C	D
LPV DA		1289-½	200 (200-½)	
LNAV/VNAV DA		1376-½	287 (300-½)	
LNAV MDA	1520-½	431 (500-½)	1520-¾	431 (500-¾)
CIRCLING	1620-1	510 (600-1)	1820-2 710 (800-2)	1820-2¼ 710 (800-2¼)

SC-1, 19 MAY 2022 to 16 JUN 2022

SC-1, 19 MAY 2022 to 16 JUN 2022