

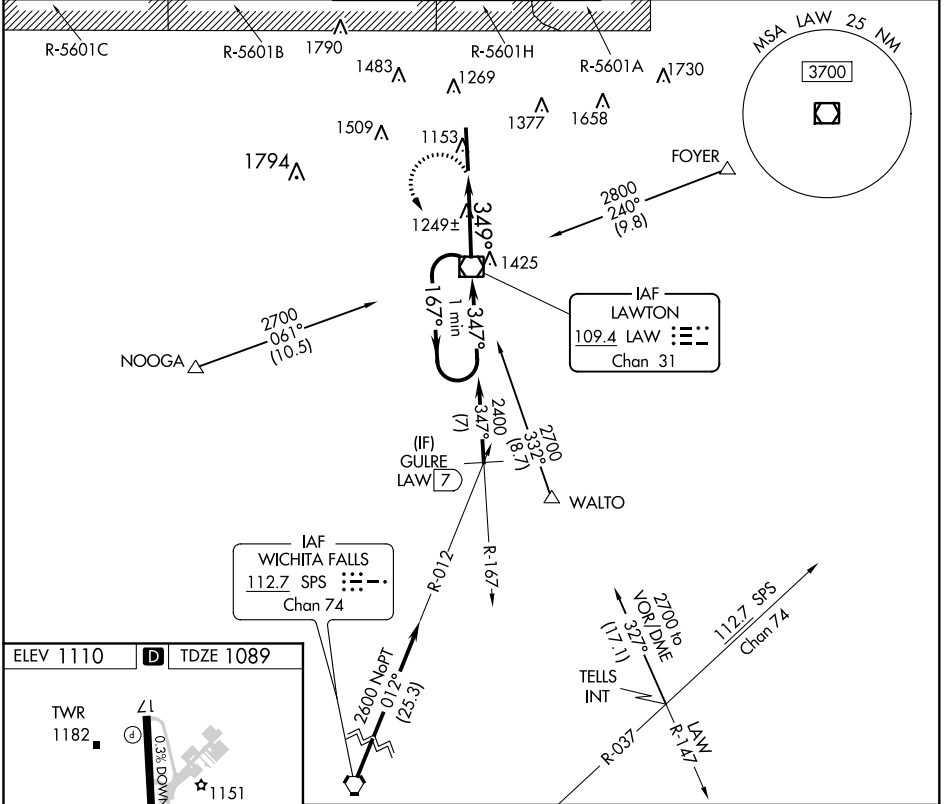
VOR/DME LAW 109.4 Chan 31	APP CRS 349°	Rwy Idg 8599 TDZE 1089 Apt Elev 1110
---	------------------------	---

VOR RWY 35

LAWTON-FORT SILL RGNL (LAW)

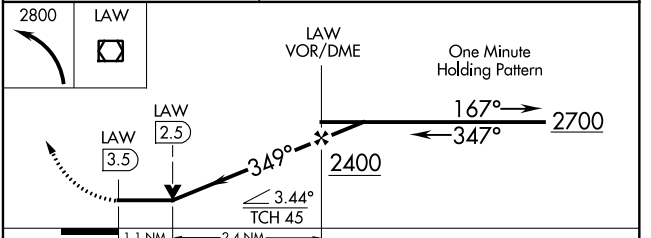
<p>▲ For inop ALS, increase Cat C/D visibility to 1½ SM.</p> <p>ASR</p>	<p>MALSR</p>	<p>MISSED APPROACH: Climbing left turn to 2800 direct LAW VOR/DME and hold, continue climb-in-hold to 2800.</p>
--	--------------	---

ATIS 120.75	FORT SILL APP CON 120.55 322.4	LAWTON TOWER ★ 119.9 (CTAF) 257.8	GND CON 121.9	UNICOM 122.95
-----------------------	--	--	-------------------------	-------------------------



ELEV 1110 **D** TDZE 1089

Knots	60	90	120	150	180
Min:Sec	3:30	2:20	1:45	1:24	1:10



CATEGORY	A	B	C	D
S-35	1500-½ 411 (500-½)		1500-¾ 411 (500-¾)	
C CIRCLING	1620-1 510 (600-1)		1820-2 710 (800-2)	1820-2¼ 710 (800-2¼)

SC-1, 19 MAY 2022 to 16 JUN 2022

SC-1, 19 MAY 2022 to 16 JUN 2022