

WAAS CH 45510 W25A	APP CRS 247°	Rwy Idg 8003 TDZE 41 Apt Elev 42
--	------------------------	---

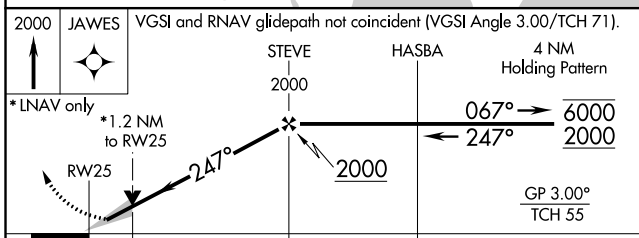
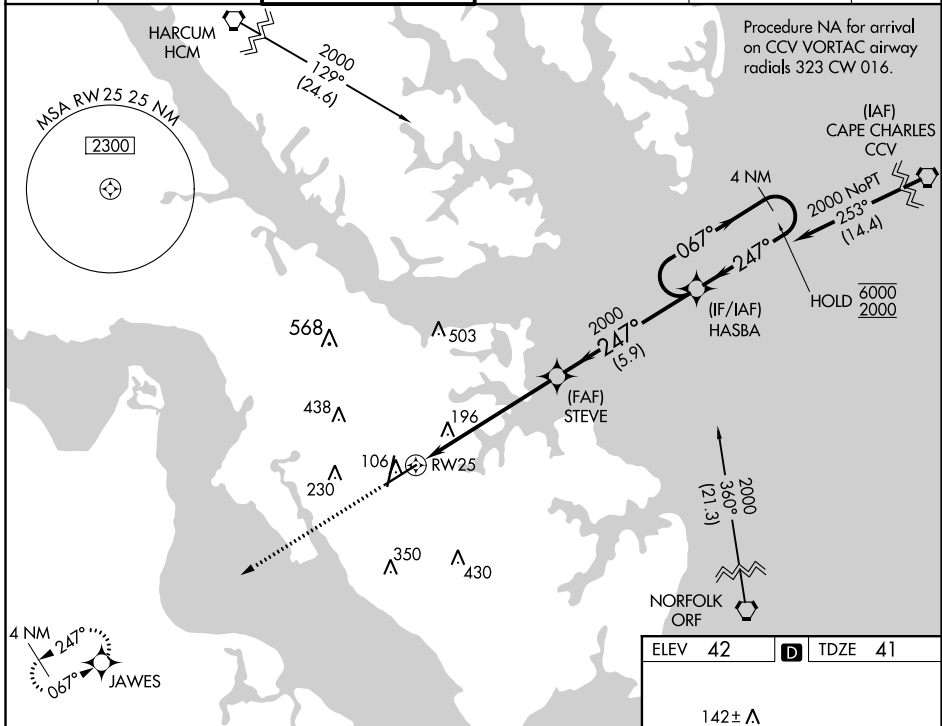
RNAV (GPS) RWY 25

NEWPORT NEWS/WILLIAMSBURG INTL (PHF)

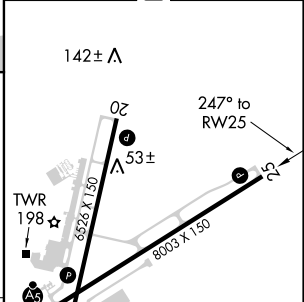
RNP APCH.
 For uncompensated Baro-VNAV systems, LNAV/VNAV NA below -11° C or above 54° C.

MISSED APPROACH: Climb to 2000 direct JAWES and hold.

ATIS 128.65	NORFOLK APP CON 125.7	NEWPORT NEWS TOWER* 118.7 (CTAF) 257.9	GND CON 121.9 348.6	CLNC DEL 121.65 225.4	UNICOM 122.95
-----------------------	---------------------------------	--	-------------------------------	---------------------------------	-------------------------



ELEV 42	D TDZE 41
---------	------------------



CATEGORY	A	B	C	D
LPV DA	241-3/4 200 (200-3/4)			
LNAV/VNAV DA	516-1 5/8 475 (500-1 5/8)			
LNAV MDA	480-1	439 (500-1)	480-1 1/4	439 (500-1 1/4)
C CIRCLING	520-1 478 (500-1)	540-1 498 (500-1)	760-2 718 (800-2)	780-2 1/4 738 (800-2 1/4)

REIL Rwy 20 and 25 **1**
 HIRL Rwy 2-20 and 7-25 **1**

NE-3, 19 MAY 2022 to 16 JUN 2022

NE-3, 19 MAY 2022 to 16 JUN 2022