

VOR/DME MFE 117.2 Chan 119	APP CRS 305°	Rwy Idg 7120 TDZE 102 Apt Elev 107
------------------------------------------------	------------------------	---------------------------------------------------------------

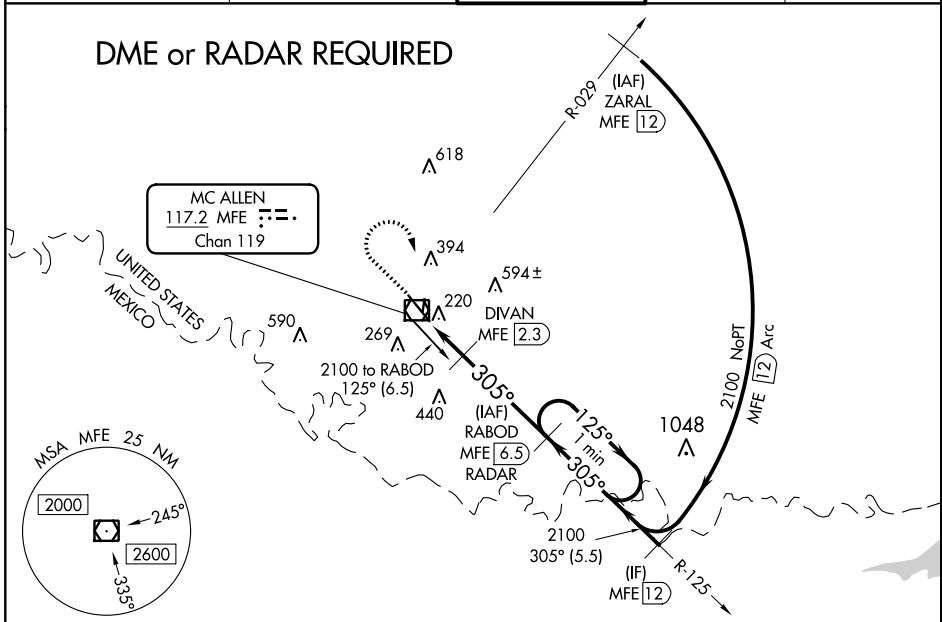
VOR RWY 32

MC ALLEN MILLER INTL (MFE)

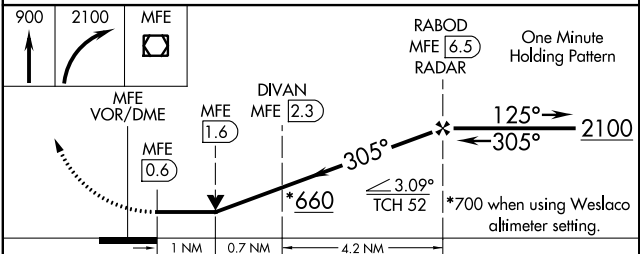
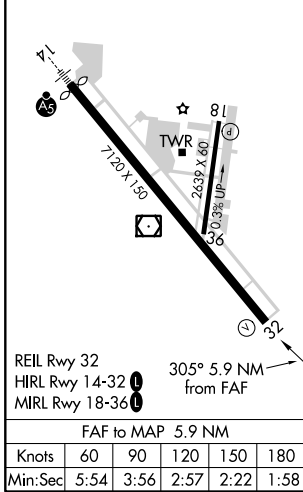
⚠ Circling NA northeast of Rwy 14-32. When local altimeter setting not received, use Weslaco altimeter setting and increase all MDA 40 feet and S-32 Cat C/D and Circling Cat C visibility 1/8 mile, increase DIVAN Fix Minimums S-32 Cat C/D visibility 1/8 mile. VDP NA when using Weslaco altimeter setting.

MISSED APPROACH: Climb to 900 then climbing right turn to 2100 direct MFE VOR/DME.

ATIS 128.5	VALLEY APP CON 121.0 377.2	MC ALLEN TOWER* 118.5 (CTAF) 256.9	GND CON 121.8	UNICOM 122.95
----------------------	--------------------------------------	----------------------------------------------	-------------------------	-------------------------



ELEV 107	D	TDZE 102
-----------------	----------	-----------------



CATEGORY	A	B	C	D
S-32	660-1	558 (600-1)	660-1½	558 (600-1½)
C CIRCLING	660-1	553 (600-1)	660-1½ 553 (600-1½)	800-2¼ 693 (700-2¼)
DIVAN FIX MINIMUMS				
S-32	480-1 378 (400-1)			
C CIRCLING	580-1	473 (500-1)	580-1½ 473 (500-1½)	800-2¼ 693 (700-2¼)

SC-3, 19 MAY 2022 to 16 JUN 2022

SC-3, 19 MAY 2022 to 16 JUN 2022