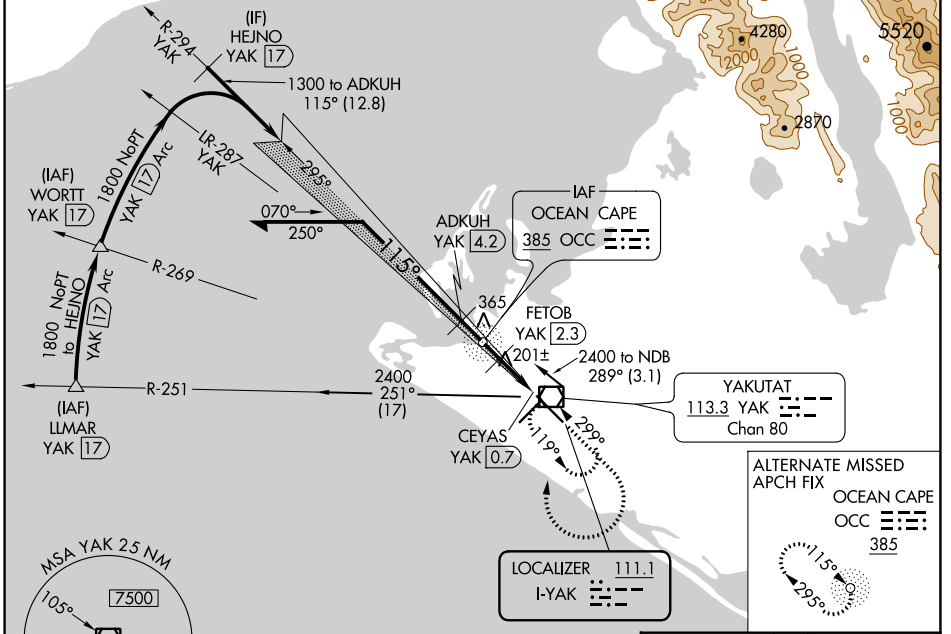


LOC I-YAK 111.1	APP CRS 115°	Rwy Idg 7732 TDZE 33 Apt Elev 33
---------------------------	------------------------	-------------------------------------------------------------

ILS or LOC/DME RWY 11

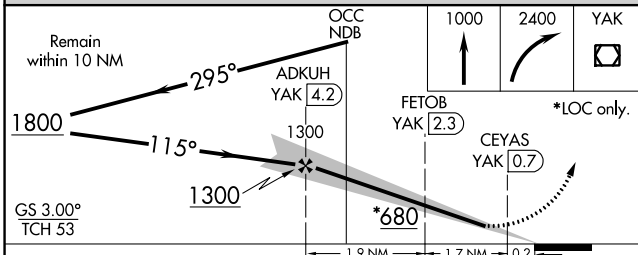
YAKUTAT (YAK) (PAYA)

<p>DME from YAK VOR/DME, simultaneous reception of I-YAK and YAK DME required.</p>	<p>MALSR</p>	<p>MISSED APPROACH: Climb to 1000 then climbing right turn to 2400 direct YAK VOR/DME and hold, continue climb-in-hold to 2400.</p>

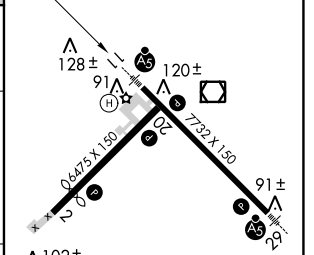


ADF or DME REQUIRED

MSA YAK 25 NM
7500
2000
105°
285°



ELEV 33	D TDZE 33
---------	------------------



CATEGORY	A	B	C	D
S-ILS 11	233/24 200 (200-½)			
S-LOC 11	460/24	427 (500-½)	460/40	427 (500-¾)
C CIRCLING	500-1 467 (500-1)	520-1 487 (500-1)	620-1½ 587 (600-1½)	720-2¼ 687 (700-2¼)

REIL Rwys 2 and 20 **D**
HIRL Rwys 2-20 and 11-29 **D**

AK, 19 MAY 2022 to 14 JUL 2022

AK, 19 MAY 2022 to 14 JUL 2022