

WAAS CH <b>86414</b> <b>W11A</b>	APP CRS <b>115°</b>	Rwy Idg TDZE Apt Elev	<b>7732</b> <b>33</b> <b>33</b>
--	------------------------	-----------------------------	---------------------------------------

# RNAV (GPS) RWY 11

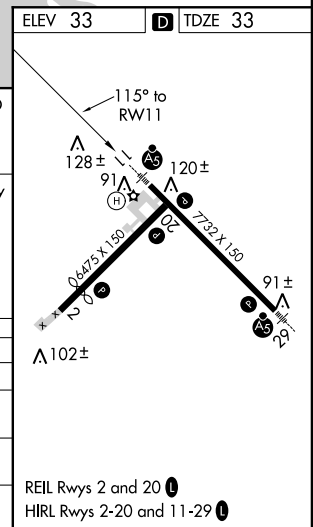
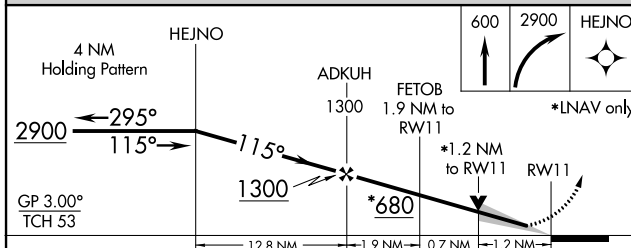
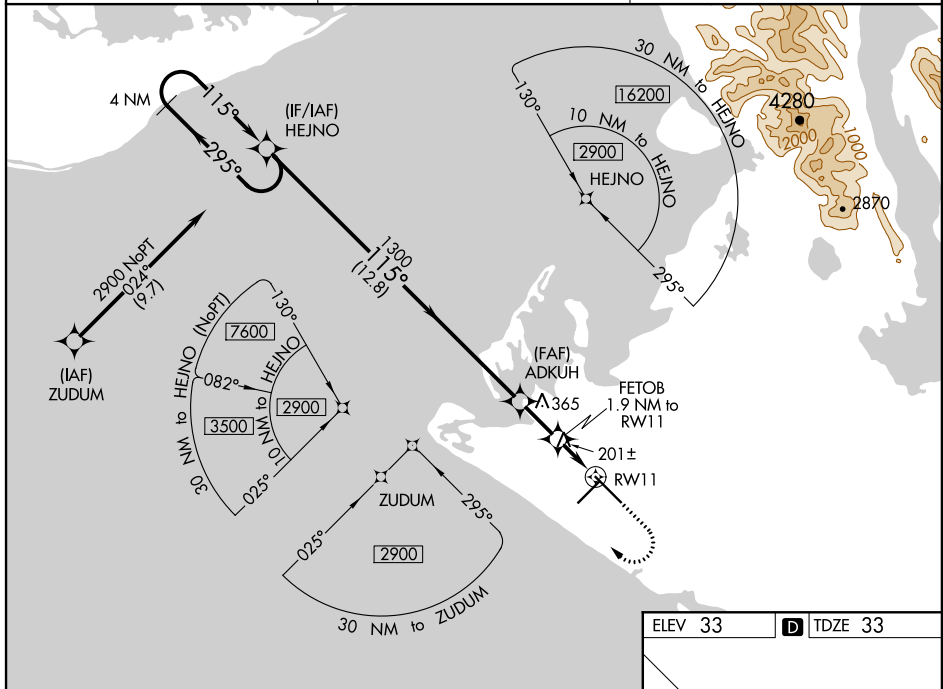
YAKUTAT (YAK) (PAYA)

▼ For uncompensated Baro-VNAV systems, LNAV/VNAV  
▲ NA below -18°C (0°F) or above 54°C (130°F).  
 DME/DME RNP-0.3 NA.

MALSR

MISSED APPROACH: Climb to 600 then climbing right turn to 2900 direct HEJNO and hold.

ASOS <b>135.75</b>	ANCHORAGE CENTER <b>119.0 263.1</b>	JUNEAU RADIO <b>123.6 (CTAF) 0</b>
-----------------------	--	---------------------------------------



CATEGORY	A	B	C	D
LPV DA		233/24	200 (200-½)	
LNAV/VNAV DA		508/57	475 (500-¼)	
LNAV MDA	460/24	427 (500-½)	460/40	427 (500-¾)
CIRCLING	500-1	520-1	620-1½	720-2¼
	467 (500-1)	487 (500-1)	587 (600-½)	687 (700-2¼)

AK, 19 MAY 2022 to 14 JUL 2022

AK, 19 MAY 2022 to 14 JUL 2022