

VOR/DME ODK 117.1 Chan 118	APP CRS 237°	Rwy Idg 7534 TDZE 32 Apt Elev 79
--	------------------------	---

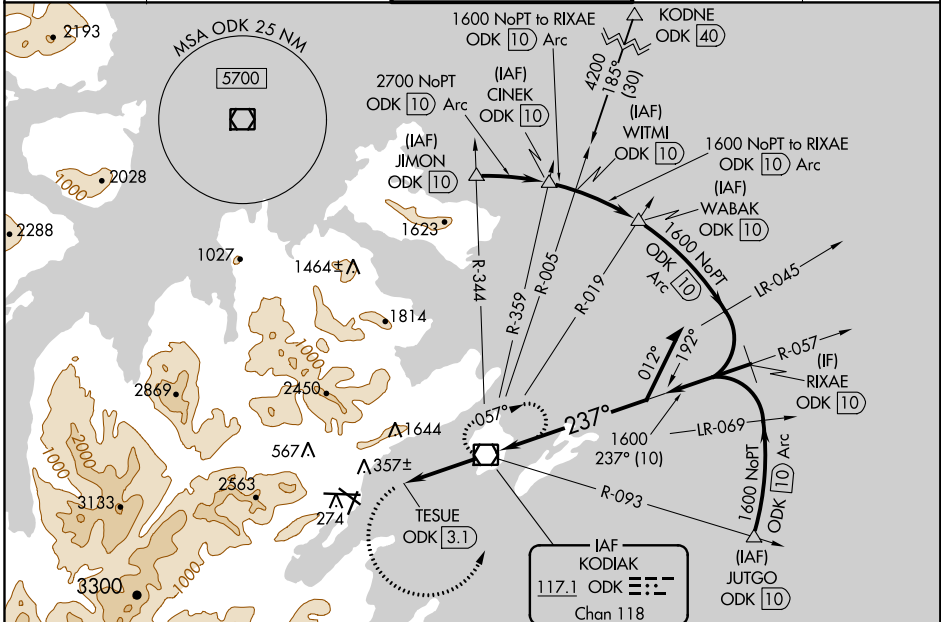
VOR RWY 26

KODIAK (ADQ)(PADQ)

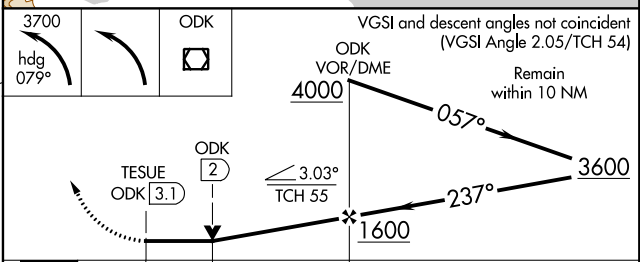
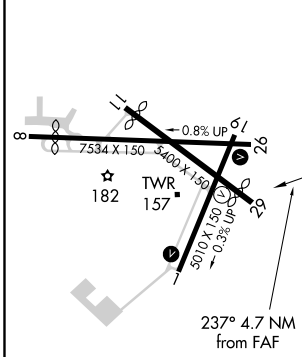
⚠ Circling NA north of Rwy 8-26 and west of Rwy 1-19.
⚠ Circling Rwy 1 NA at night. Circling NA to Rwys 8, 11 and 19.
 Rapidly rising terrain north, west, and south of airport.

MISSED APPROACH: Climbing left turn to 3700 on heading 079° then left turn direct ODK VOR/DME and hold.

ATIS 134.45	ANCHORAGE CENTER 125.1 281.4	KODIAK TOWER* 119.8 (CTAF) 239.0	GND CON 121.9	UNICOM 122.8
-----------------------	--	--	-------------------------	------------------------



ELEV 79	D	TDZE 32
---------	----------	---------



REIL Rwys 1 and 26					
HIRL Rwys 1-19, 8-26, and 11-29					
FAF to MAP 3.1 NM					
Knots	60	90	120	150	180
Min:Sec	3:06	2:04	1:33	1:14	1:02
C CIRCLING	660-2 581 (600-2)	720-2 641 (700-2)	1140-3 1061 (1100-3)	NA	

AK, 19 MAY 2022 to 14 JUL 2022

AK, 19 MAY 2022 to 14 JUL 2022