

WAAS CH <b>62803</b> <b>W10A</b>	APP CRS <b>096°</b>	Rwy ldg TDZE Apt Elev	<b>4199</b> <b>673</b> <b>673</b>
--	------------------------	-----------------------------	---

# RNAV (GPS) RWY 10

WOOD COUNTY (1G4)

RNP APCH.

**▽** Circling Rwy 36 NA at night. VDP NA when using Toledo Express altimeter setting.  
**▲** NA When local altimeter setting not received, use Toledo Express altimeter setting: increase DA to 974 feet; increase all MDA 40 feet and LNAV Cat C visibility ¼ SM, Circling Cat C/D visibility ¼ SM.

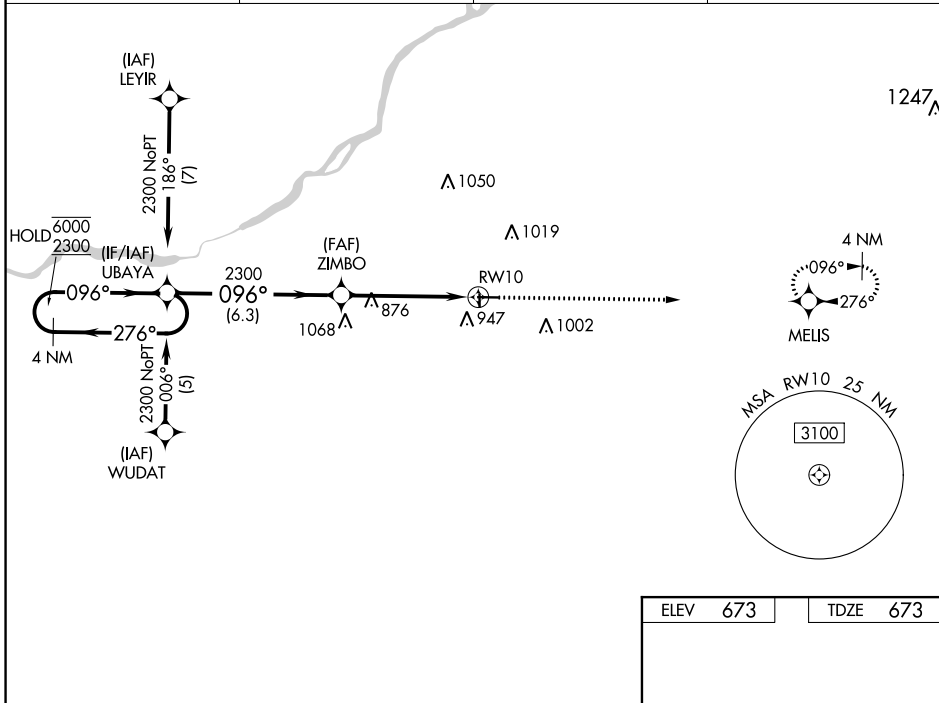
**MISSED APPROACH:**  
Climb to 2300 direct MELIS and hold.

AWOS-3  
**120.725**

TOLEDO APP CON  
**126.1 317.55**

CLNC DEL  
**125.6**

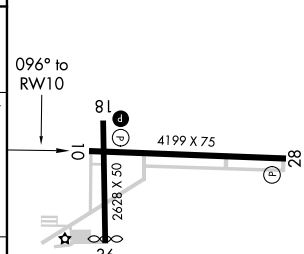
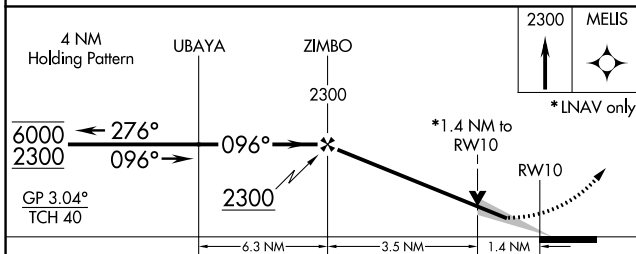
UNICOM  
**122.975 (CTAF)** **1**



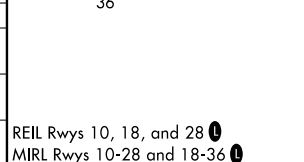
EC-2, 19 MAY 2022 to 16 JUN 2022

EC-2, 19 MAY 2022 to 16 JUN 2022

ELEV	673	TDZE	673
------	-----	------	-----



CATEGORY	A	B	C	D
LPV DA	939-1		266 (300-1)	
LNAV MDA	1160-1	487 (500-1)	1160-1½ 487 (500-1½)	1160-1½ 487 (500-1½)
CIRCLING	1300-1	627 (700-1)	1320-1¾ 647 (700-1¾)	1320-2 647 (700-2)



REIL Rwy 10, 18, and 28 **1**  
MRL Rwy 10-28 and 18-36 **1**