

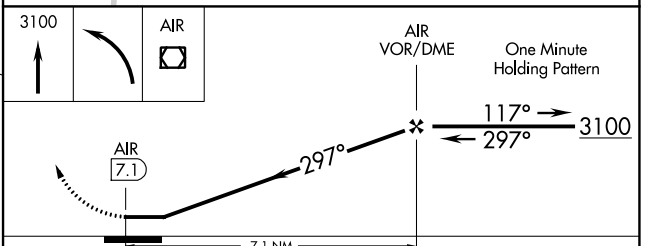
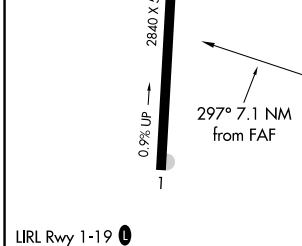
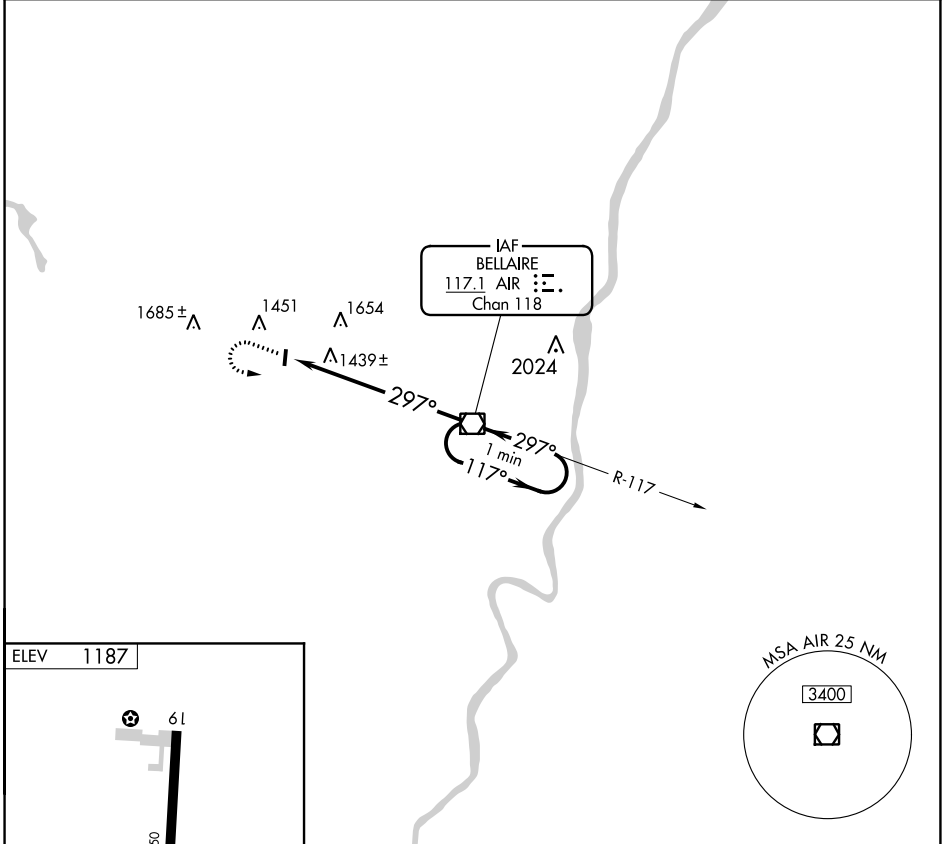
VOR/DME AIR <b>117.1</b> Chan <b>118</b>	APP CRS <b>297°</b>	Rwy Idg TDZE Apt Elev <b>1187</b>	<b>N/A</b> <b>N/A</b> <b>1187</b>
--	------------------------	---	---

**VOR-A**  
ALDERMAN (2P7)

**NA** Use Wheeling Ohio County altimeter setting; when not received, use Pittsburgh Intl altimeter setting and increase all MDAs 80 feet and Circling Cat A visibility ¼ SM. Procedure NA at night. Helicopter visibility reduction below 1 SM NA.

MISSED APPROACH: Climb to 3100 then left turn direct AIR VOR/DME and hold.

HIG ASOS <b>127.375</b>	CLEVELAND CENTER <b>126.95 239.30</b>	CTAF <b>122.9</b>	<b>123.3 0</b>
----------------------------	--	----------------------	----------------



FAF to MAP 7.1 NM					
Knots	60	90	120	150	180
Min:Sec	7:06	4:44	3:33	2:50	2:22
CATEGORY	A		B		C D
CIRCLING	1920-1 733 (800-1)		2000-1¼ 813 (900-1¼)		NA

EC-2, 19 MAY 2022 to 16 JUN 2022

EC-2, 19 MAY 2022 to 16 JUN 2022