

WAAS CH <b>42510</b> <b>W10A</b>	APP CRS <b>098°</b>	Rwy Idg TDZE Apt Elev	<b>3898</b> <b>906</b> <b>906</b>
--	------------------------	-----------------------------	---

# RNAV (GPS) RWY 10L

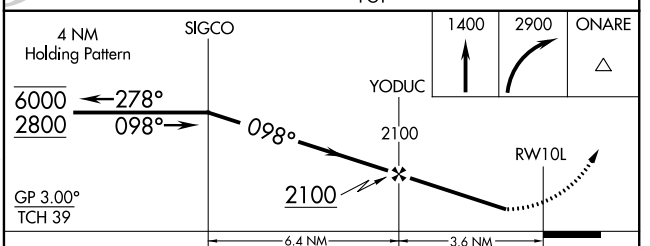
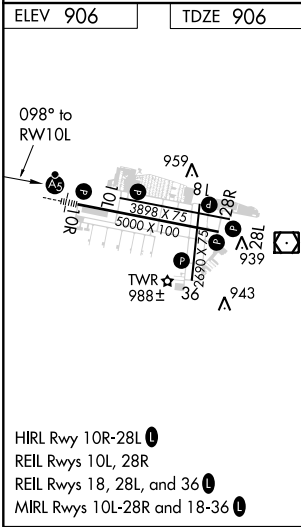
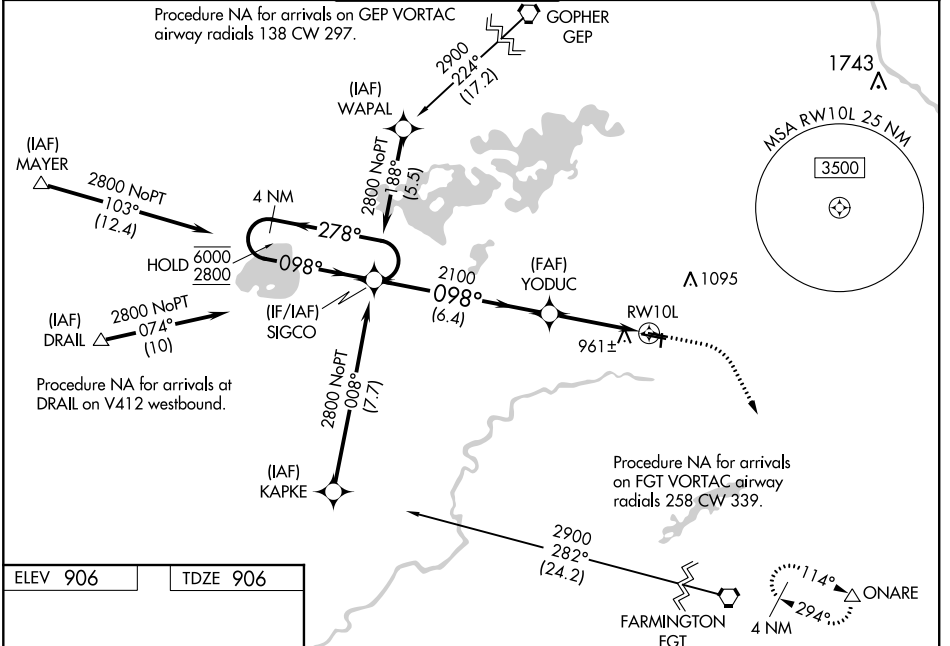
FLYING CLOUD (FCM)

**RNP APCH.**

▼ Baro-VNAV NA when using Minneapolis-St Paul Intl/Wold Chamberlain altimeter setting.  
 ▲ For uncompensated Baro-VNAV systems, LNAV-VNAV NA below -22°C (-7°F) or above 54°C (130°F). When local altimeter setting not received, use Minneapolis-St Paul Intl/Wold Chamberlain altimeter setting and increase all DA 34 feet and all MDA 40 feet; increase LNAV/VNAV visibility 1/8 mile all Cats, and Circling Cat D 1/4 mile. When Circling to Rwy 18, 36 at night, operational VGSI required, remain on or above VGSI glidepath until threshold.

MISSED APPROACH: Climb to 1400 then climbing right turn to 2900 direct ONARE and hold.

ATIS <b>124.9</b>	MINNEAPOLIS APP CON <b>134.7 284.7</b>	FLYING CLOUD TOWER * <b>119.15 (CTAF)</b>	GND CON <b>121.7</b>	CLNC DEL <b>121.7</b> (When twr closed)	UNICOM <b>122.95</b>
----------------------	---	--	-------------------------	---	-------------------------



CATEGORY	A	B	C	D
LPV DA		1187-1	281 (300-1)	
LNAV/ VNAV DA		1230-1 1/8	324 (400-1 1/8)	
LNAV MDA		1240-1	334 (400-1)	
<b>C</b> CIRCLING	1320-1 414 (500-1)	1440-1 534 (600-1)	1440-1 1/2 534 (600-1 1/2)	1540-2 634 (700-2)

# FLYING CLOUD (FCM) RNAV (GPS) RWY 10L

NC-1, 19 MAY 2022 to 16 JUN 2022