

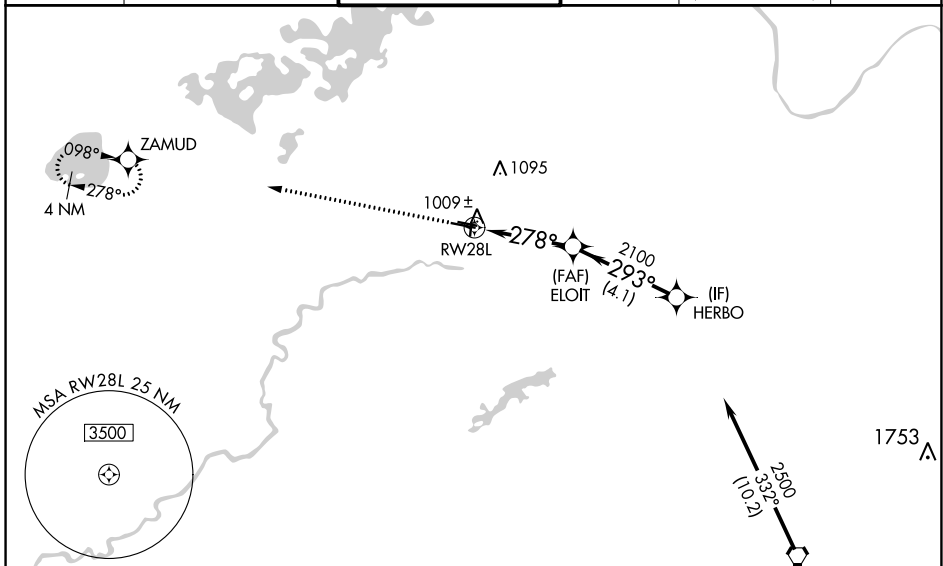
WAAS CH 90218 W28B	APP CRS 278°	Rwy Idg TDZE Apt Elev	5000 906 906
--	------------------------	-----------------------------	---

RNAV (GPS) RWY 28L

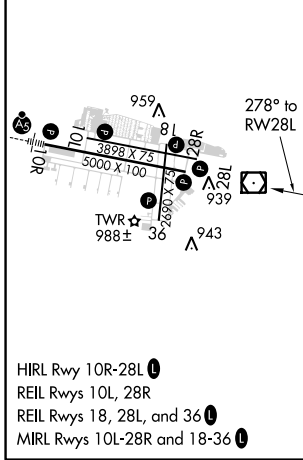
FLYING CLOUD (FCM)

RNP APCH.	<p>MISSED APPROACH: Climb to 2700 direct ZAMUD and hold.</p>
<p>⚠ For uncompensated Baro-VNAV systems, LNAV/VNAV NA below -16°C (2°F) or above 54°C (130°F). When local altimeter setting not received, use Minneapolis-St Paul Intl/Wald-Chamberlain altimeter setting and increase all DA 34 feet and all MDA 40 feet, increase LNAV Cats C and D visibility 1/8 mile. Helicopters visibility reduction below 3/4 SM NA. When Circling to Rwy 18, 36 at night, operational VGSI required, remain on or above VGSI glidepath until threshold.</p>	

ATIS 124.9	MINNEAPOLIS APP CON 134.7 284.7	FLYING CLOUD TOWER * 119.15 (CTAF)	GND CON 121.7	CLNC DEL 121.7 (When twr closed)	UNICOM 122.95
----------------------	---	--	-------------------------	---	-------------------------



ELEV 906	TDZE 906
----------	----------



Procedure NA for arrivals on FGT VORTAC
airway radials 258 CW 011.

2700	ZAMUD	VGSI and RNAV glidepath not coincident (VGSI Angle 3.00/TCH 44).	HERBO
			2500
			GP 3.00° TCH 55

CATEGORY	A	B	C	D
LPV DA		1156-1	250 (300-1)	
LNAV/ VNAV DA		1198-1	292 (300-1)	
LNAV MDA	1280-1	374 (400-1)	1280-1 1/8	374 (400-1 1/8)
C CIRCLING	1320-1 414 (500-1)	1440-1 534 (600-1)	1440-1 1/2 534 (600-1 1/2)	1540-2 634 (700-2)

NC-1, 19 MAY 2022 to 16 JUN 2022

NC-1, 19 MAY 2022 to 16 JUN 2022