

WAAS CH <b>99709</b> <b>W28A</b>	APP CRS <b>278°</b>	Rwy Idg TDZE Apt Elev	<b>3898</b> <b>904</b> <b>906</b>
--	------------------------	-----------------------------	---

# RNAV (GPS) RWY 28R

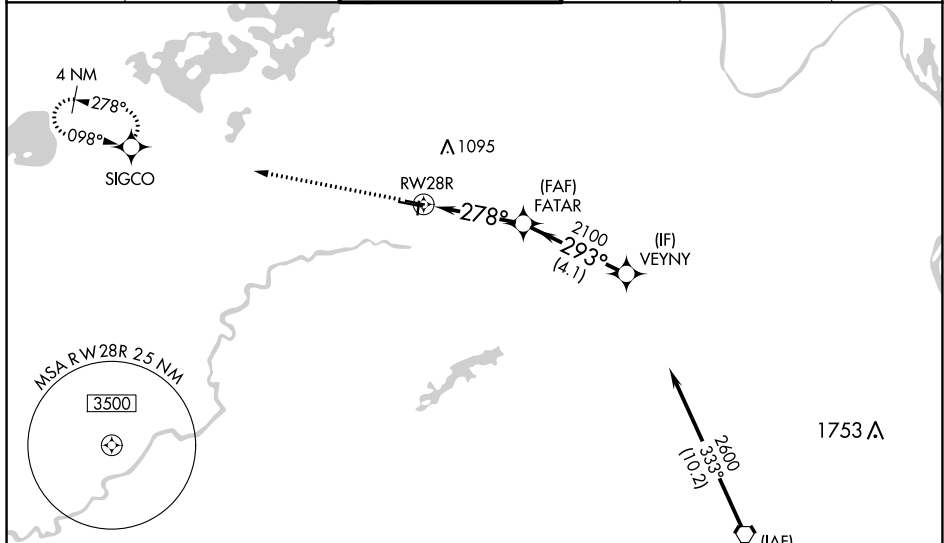
FLYING CLOUD (FCM)

RNP APCH.

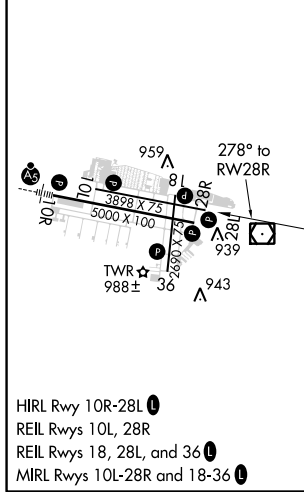
**⚠** Baro-VNAV NA when using Minneapolis-St Paul Intl/Wold Chamberlain altimeter setting.  
**⚠** For uncompensated Baro-VNAV systems, LNAV/VNAV NA below -21°C (-5°F) or above 54°C (130°F). Helicopter visibility reduction below 3/4 SM NA. When local altimeter setting not received, use Minneapolis-St Paul Intl/Wold Chamberlain altimeter setting and increase all DA 34 feet and all MDA 40 feet; increase Circling Cat D visibility 1/4 mile. When Circling to Rwy 18, 36 at night, operational VGSi required, remain on or above VGSi glidepath until threshold.

MISSED APPROACH: Climb to 2800 direct SIGCO and hold.

ATIS <b>124.9</b>	MINNEAPOLIS APP CON <b>134.7 284.7</b>	FLYING CLOUD TOWER * <b>119.15 (CTAF)</b>	GND CON <b>121.7</b>	CLNC DEL <b>121.7</b> (When twr closed)	UNICOM <b>122.95</b>
----------------------	---	--	-------------------------	---	-------------------------

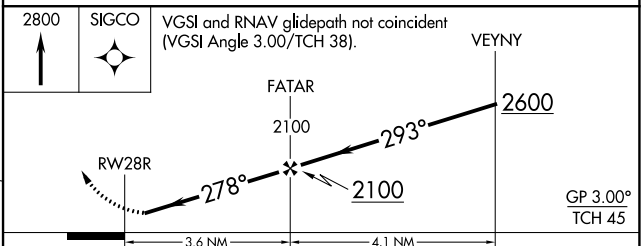


ELEV 906	TDZE 904
----------	----------



HIRL Rwy 10R-28L  
 REIL Rwy 10L, 28R  
 REIL Rwy 18, 28L, and 36  
 MIRL Rwy 10L-28R and 18-36

Procedure NA for arrivals on FGT VORTAC  
 airway radials 258 CW 011.



CATEGORY	A	B	C	D
LPV DA		1154-1	250 (300-1)	
LNAV/ VNAV DA		1154-1	250 (300-1)	
LNAV MDA		1240-1	336 (400-1)	
<b>C</b> CIRCLING	1320-1 414 (500-1)	1440-1 534 (600-1)	1440-1½ 534 (600-1½)	1540-2 634 (700-2)

NC-1, 19 MAY 2022 to 16 JUN 2022

NC-1, 19 MAY 2022 to 16 JUN 2022