

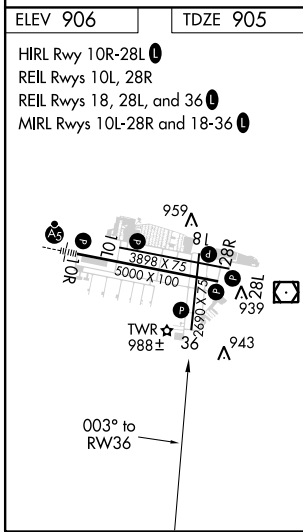
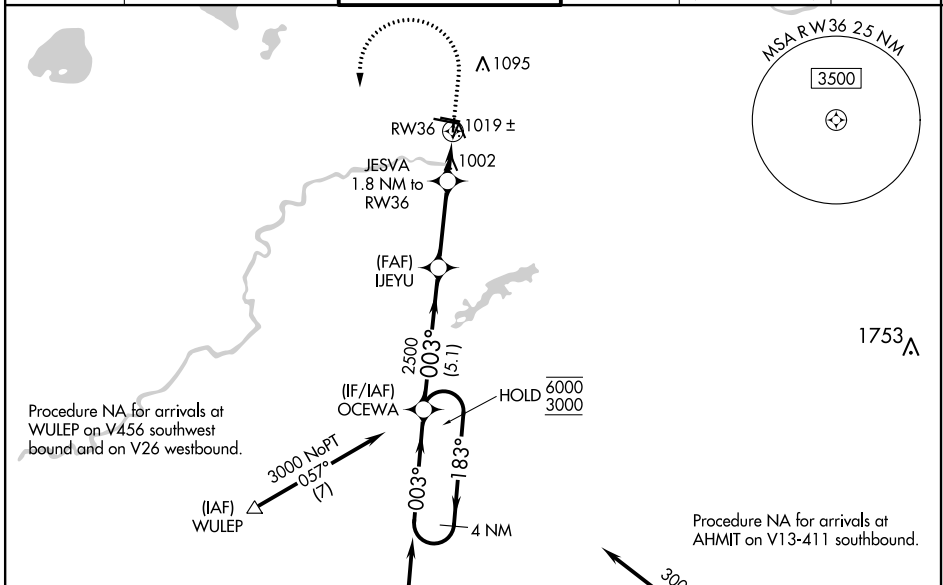
WAAS CH 82635 W36A	APP CRS 003°	Rwy Idg TDZE Apt Elev	2690 905 906
--	------------------------	-----------------------------	---

RNAV (GPS) RWY 36

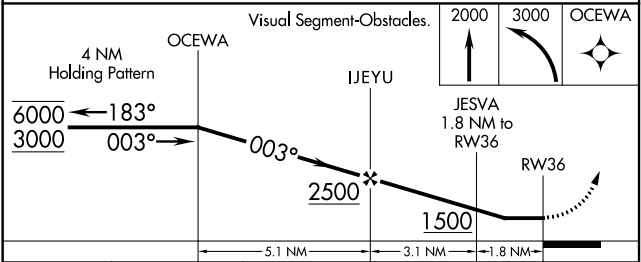
FLYING CLOUD (FCM)

RNP APCH.	<p>⚠ Helicopter visibility reduction below 1 SM NA. When local altimeter setting not received, use Minneapolis St Paul Intl/Wold-Chamberlain altimeter setting and increase all MDA 40 feet and increase LP and LNAV Cat C visibility 1/8 mile. Straight-in Rwy 36 at night, and Circling Rwy 18, 36 at night, operational VGSI required, remain on or above VGSI glidepath until threshold.</p>	<p>MISSED APPROACH: Climb to 2000 then climbing left turn to 3000 direct OCEWA and hold.</p>
-----------	---	--

ATIS 124.9	MINNEAPOLIS APP CON 134.7 284.7	FLYING CLOUD TOWER * 119.15 (CTAF) 0	GND CON 121.7	CLNC DEL 121.7 (When twr closed)	UNICOM 122.95
----------------------	---	--	-------------------------	---	-------------------------



ELEV 906	TDZE 905
HIRL Rwy 10R-28L	
REIL Rwy 10L, 28R	
REIL Rwy 18, 28L, and 36	
MIRL Rwy 10L-28R and 18-36	



CATEGORY	A	B	C	D
LP MDA		1260-1	355 (400-1)	NA
LNAV MDA		1280-1	375 (400-1)	NA
C CIRCLING	1320-1 414 (500-1)	1440-1 534 (600-1)	1440-1½ 534 (600-1½)	NA

NC-1, 19 MAY 2022 to 16 JUN 2022

NC-1, 19 MAY 2022 to 16 JUN 2022