

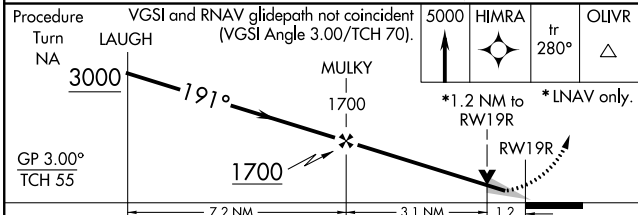
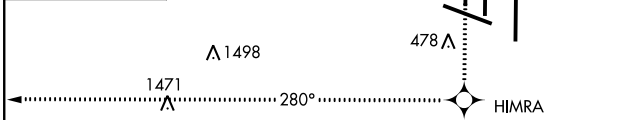
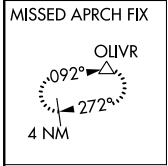
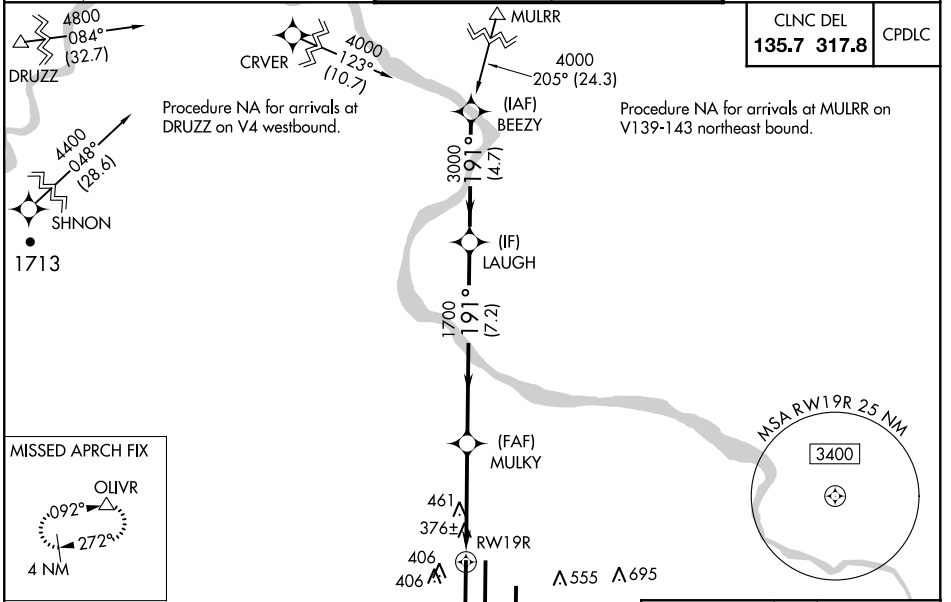
WAAS CH <b>86709</b> <b>W19D</b>	APP CRS <b>191°</b>	Rwy Idg <b>9400</b> TDZE <b>278</b> Apt Elev <b>313</b>
--	------------------------	---

# RNAV (GPS) RWY 19R

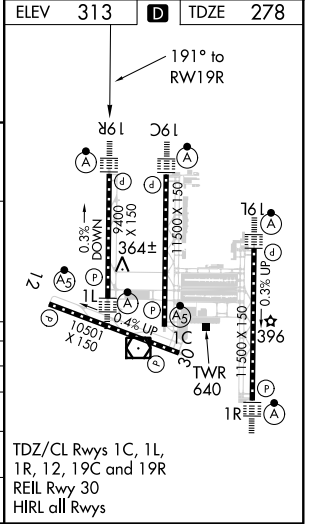
WASHINGTON DULLES INTL (IAD)

RNP APCH.	<p>For uncompensated Baro-VNAV systems, LNAV/VNAV NA below -15°C or above 48°C. Simultaneous approach authorized with ILS or LOC Rwy 19L, ILS Rwy 19L (Cat II). LNAV procedure NA during simultaneous operations. Use of FD or AP providing RNAV track guidance required during simultaneous operations.</p>	<p>ALSF-2</p>	<p>MISSED APPROACH: Climb to 5000 direct HIMRA and on 280° track to OLIVR and hold, continue climb-in-hold to 5000.</p>
-----------	--	---------------	---

D-ATIS <b>134.85</b>	POTOMAC APP CON <b>120.45 306.925</b> (241°-330°) <b>128.525 306.925</b> (091°-240°) <b>126.1 338.25</b> (331°-090°)	DULLES TOWER <b>120.1 317.8</b> (Rwy 1R/19L) <b>120.25 348.6</b> (Rwy 1C/19C) <b>134.425 348.6</b> (Rwy 1L/19R and 12/30)	GND CON <b>121.9 317.8</b> (EAST) <b>121.625 348.6</b> (WEST)
-------------------------	---	--	---



CATEGORY	A	B	C	D
LPV DA		478/18	200 (200-½)	
LNAV/VNAV DA		714/50	436 (500-1)	
LNAV MDA	720/24	442 (500-½)	720/40 442 (500-¾)	720/50 442 (500-1)
CIRCLING	940-1	627 (700-1)	940-1¾ 627 (700-1¾)	1060-2½ 747 (800-2½)



NE-3, 19 MAY 2022 to 16 JUN 2022

NE-3, 19 MAY 2022 to 16 JUN 2022