

WAAS CH 50511 W28A	APP CRS 276°	Rwy Idg TDZE Apt Elev	6000 975 975
--	------------------------	-----------------------------	---

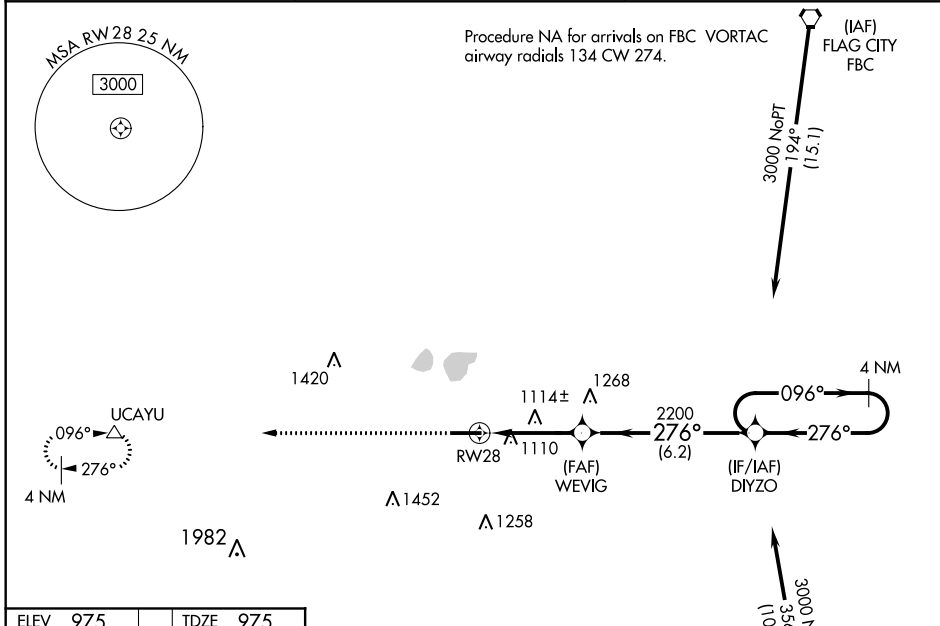
RNAV (GPS) RWY 28

LIMA ALLEN COUNTY (AOH)

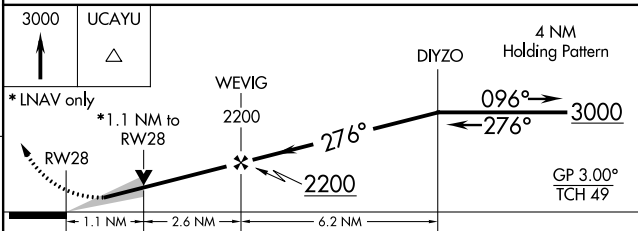
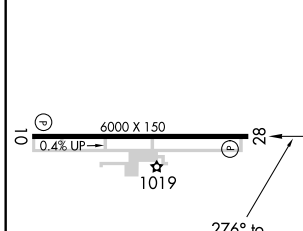
⚠ Baro-VNAV NA when using Findlay altimeter setting. For uncompensated Baro-VNAV systems, LNAV/VNAV NA below -16°C (4°F) or above 37°C (98°F). When local altimeter setting not received, use Findlay altimeter setting and increase LPV DA to 1255, LNAV/VNAV DA to 1477 and all MDAs 80 feet; increase LPV all Cats visibility 1/8 SM, LNAV/VNAV all Cats, LNAV Cats C/D and Circling Cats C/D 1/4 SM. DME/DME RNP-0.3 NA. VDP NA with Findlay altimeter setting.

MISSED APPROACH:
Climb to 3000 direct UCAYU and hold.

ASOS 128.725	COLUMBUS APP CON 118.425 323.15	UNICOM 122.7 (CTAF) 0
------------------------	---	---------------------------------



ELEV 975	TDZE 975
----------	----------



CATEGORY	A	B	C	D
LPV DA		1175-3/4	200 (200-3/4)	
LNAV/VNAV DA		1397-1 3/8	422 (500-1 3/8)	
LNAV MDA	1380-1	405 (500-1)	1380-1 1/8	405 (500-1 1/8)
CIRCLING	1420-1 445 (500-1)	1440-1 465 (500-1)	1540-1 1/2 565 (600-1 1/2)	1820-2 3/4 845 (900-2 3/4)

LIMA, OHIO
Amdt 2C 02DEC21

40°42'N-84°02'W

RNAV (GPS) RWY 28

EC-2, 19 MAY 2022 to 16 JUN 2022

EC-2, 19 MAY 2022 to 16 JUN 2022