

WAAS CH 77836 W22A	APP CRS 217°	Rwy Idg TDZE Apt Elev	4997 1119 1119
--	------------------------	-----------------------------	---

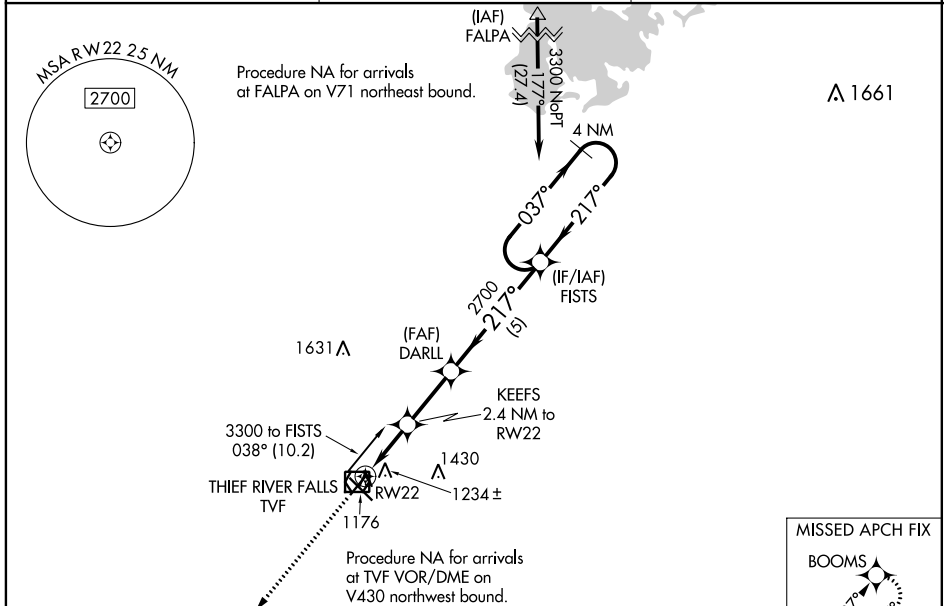
RNAV (GPS) RWY 22

THIEF RIVER FALLS RGNL (TVF)

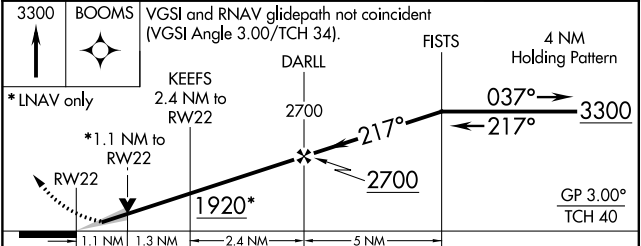
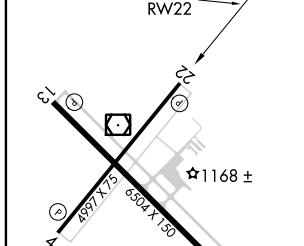
⚠ Baro-VNAV and VDP NA when using Crookston altimeter setting. For uncompensated Baro-VNAV systems, LNAV/VNAV NA below -17°C (2°F) or above 54°C (130°F). DME/DME RNP-0.3 NA. When local altimeter setting not received, use Crookston altimeter setting and increase all DA 82 feet and all MDA 100 feet. Increase LPV all Cats visibility to 1 1/8 mile and LNAV/VNAV all Cats visibility to 1/4 mile.

MISSED APPROACH:
Climb 3300 direct
BOOMS and hold.

AWOS-3PT 119.025	MINNEAPOLIS CENTER 132.15 269.6	UNICOM 122.8 (CTAF) Ⓛ
----------------------------	---	--



ELEV 1119	D	TDZE 1119
-----------	----------	-----------



CATEGORY	A	B	C	D
LPV DA	1369-1	250 (300-1)		NA
LNAV/VNAV DA	1396-1	277 (300-1)		NA
LNAV MDA	1500-1	381 (400-1)		NA
C CIRCLING	1540-1 421 (500-1)	1580-1 461 (500-1)		NA

HIRL Rwy 13-31 **Ⓛ**
MIRL Rwy 4-22 **Ⓛ**
REIL Rwy 4, 13 and 22 **Ⓛ**

NC-1, 19 MAY 2022 to 16 JUN 2022

NC-1, 19 MAY 2022 to 16 JUN 2022