

WAAS CH 72621 W28A	APP CRS 281°	Rwy Idg TDZE 1253 Apt Elev 1253	4501
--	------------------------	---	-------------

RNAV (GPS) RWY 28

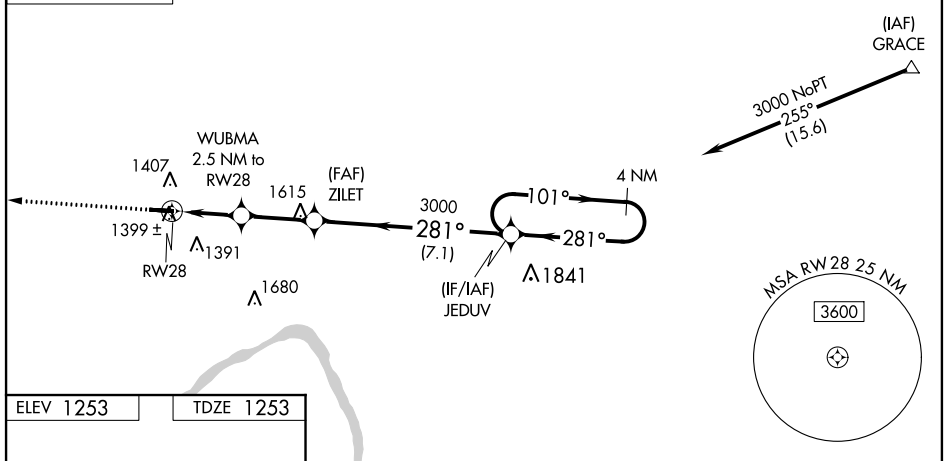
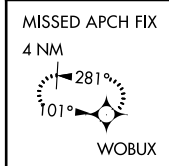
BEAVER COUNTY (BVI)

RNP APCH.

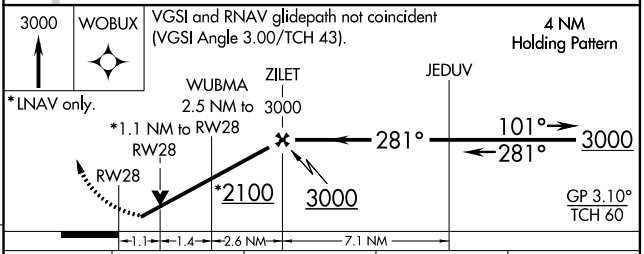
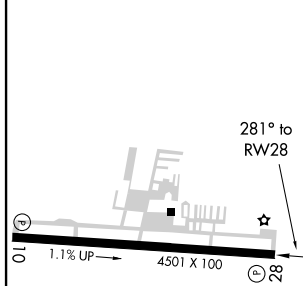
⚠ Baro-VNAV and VDP NA when using Pittsburgh Intl altimeter setting. For uncompensated Baro-VNAV systems, LNAV/VNAV NA below -17°C (2°F) or above 26°C (78°F). When local altimeter setting not received, use Pittsburgh Intl altimeter setting; increase all DA 50 feet; increase all MDAs 60 feet and visibility LNAV Cats C and D ¼ SM. Circling Rwy 28 NA at night. Rwy 28 helicopter visibility reduction below ¾ SM NA.

MISSED APPROACH: Climb to 3000 direct WOBUX and hold.

ATIS 118.35	PITTSBURGH APP CON 124.75 338.2	BEAVER COUNTY TOWER * 120.3 (CTAF) 0	GND CON 121.8	CLNC DEL 124.85 (when twr closed)
-----------------------	---	--	-------------------------	--



ELEV 1253	TDZE 1253
-----------	-----------



CATEGORY	A	B	C	D
LPV DA		1512-1	259 (300-1)	
LNAV/VNAV DA		1580-1	327 (400-1)	
LNAV MDA	1660-1	407 (500-1)	1660-1½	407 (500-1½)
CIRCLING	1720-1	467 (500-1)	1720-1½	1820-2 567 (600-2)

MIRL Rwy 10-28 **0**
REIL Rwy 10 and 28 **0**

NE-4, 19 MAY 2022 to 16 JUN 2022

NE-4, 19 MAY 2022 to 16 JUN 2022