

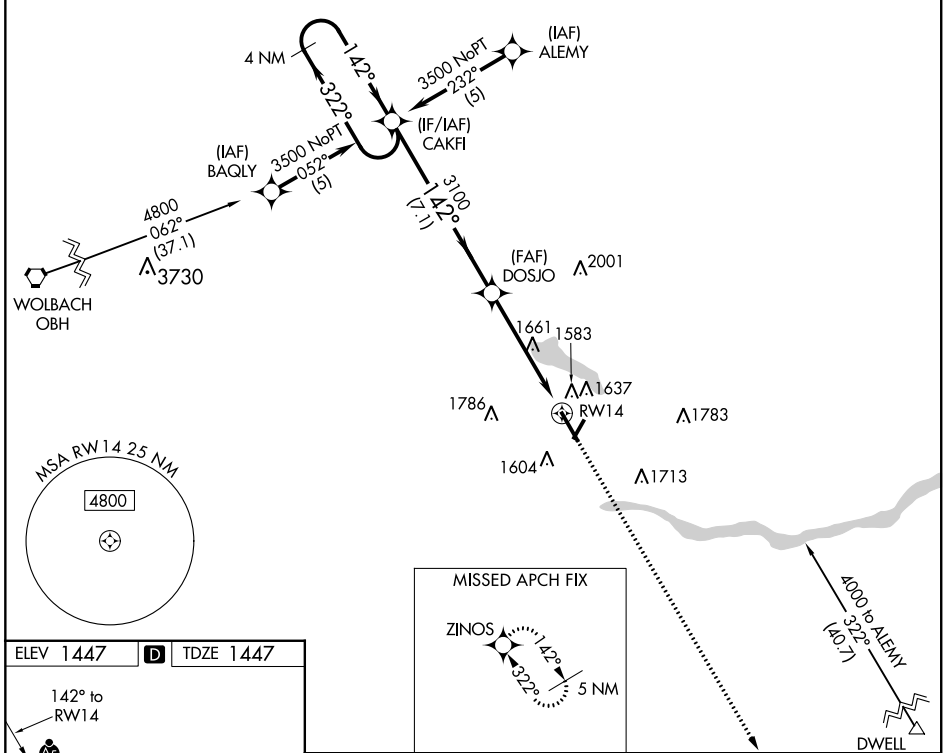
WAAS CH <b>60910</b> <b>W14A</b>	APP CRS <b>142°</b>	Rwy Idg TDZE Apt Elev	<b>6260</b> <b>1447</b> <b>1447</b>
--	------------------------	-----------------------------	---

# RNAV (GPS) RWY 14

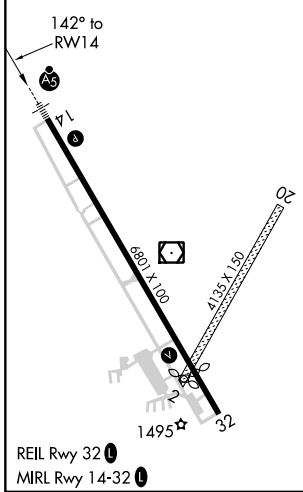
COLUMBUS MUNI (OLU)

RNP APCH.	MALSR	MISSED APPROACH: Climb to 4000 direct ZINOS and hold.
<p>For uncompensated Baro-VNAV systems, LNAV/VNAV NA below -17°C (2°F) or above 54°C (130°F). Circling Rwy 2, 20 NA. For inoperative ALS increase LPV all Cats visibility to 1 SM.</p>		

AWOS-3PT <b>125.525</b>	MINNEAPOLIS CENTER <b>128.75 346.3</b>	UNICOM <b>123.05 (CTAF)</b>
----------------------------	---	--------------------------------



ELEV 1447	D	TDZE 1447
-----------	---	-----------



4 NM Holding Pattern	CAKFI	DOSJO	4000	ZINOS
3500 ← 322°	→ 142°	→ 142°	*1.4 NM to RWY 14	*LNAV only
GP 3.00° TCH 40	7.1 NM	3.6 NM	1.4	
CATEGORY	A	B	C	D
LPV DA	1750-½ 303 (400-½)			
LNAV/VNAV DA	1840-1 393 (400-1)			
LNAV MDA	1920-½ 473 (500-½)	1920-¾ 473 (500-¾)	1920-1 473 (500-1)	
CIRCLING	2000-1 553 (600-1)	2100-1¾ 653 (700-1¾)	2100-2 653 (700-2)	

NC-2, 19 MAY 2022 to 16 JUN 2022

NC-2, 19 MAY 2022 to 16 JUN 2022