

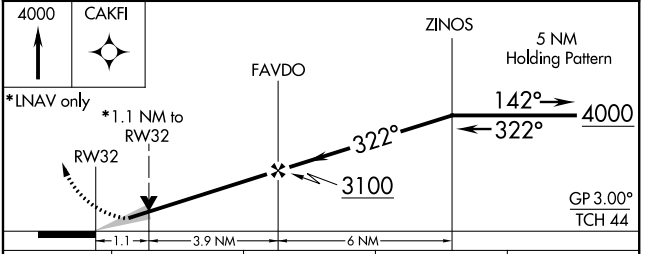
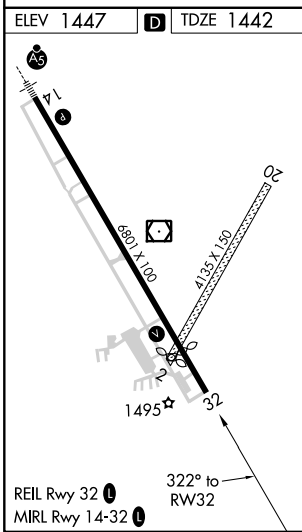
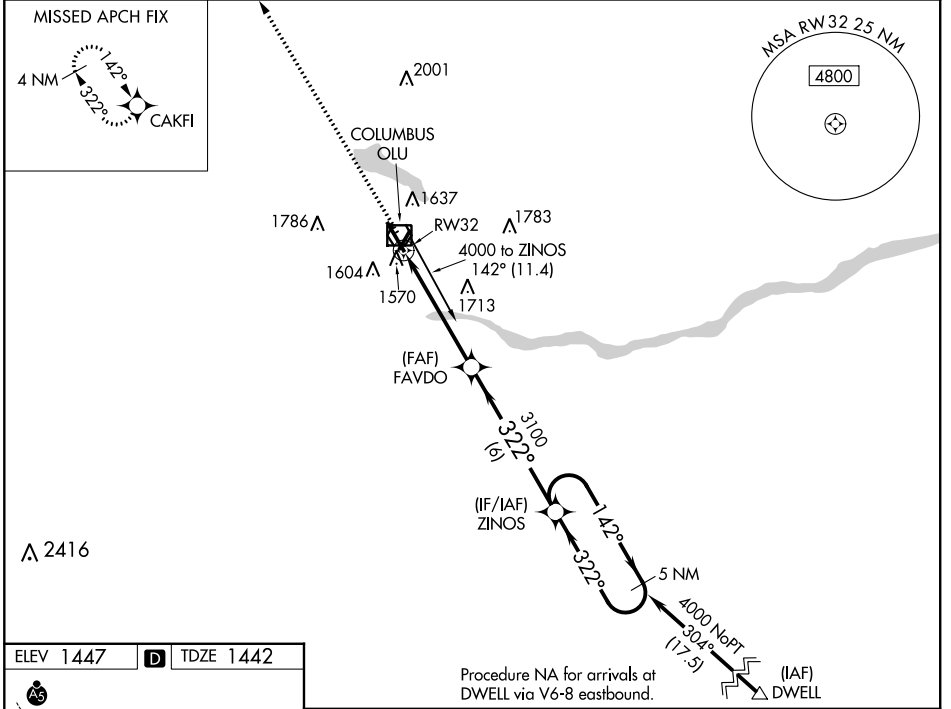
WAAS CH <b>81810</b> <b>W32A</b>	APP CRS <b>322°</b>	Rwy Idg TDZE Apt Elev	<b>5850</b> <b>1442</b> <b>1447</b>
--	------------------------	-----------------------------	---

# RNAV (GPS) RWY 32

COLUMBUS MUNI (OLU)

RNP APCH.	MISSED APPROACH: Climb to 4000 direct CAKFI and hold.
<p>▼ For uncompensated Baro-VNAV systems, LNAV/VNAV NA below -17°C (2°F) or above 54°C (130°F). Circling Rwy 2, 20 NA.</p>	

AWOS-3PT <b>125.525</b>	MINNEAPOLIS CENTER <b>128.75 346.3</b>	UNICOM <b>123.05 (CTAF)</b>
----------------------------	---	--------------------------------



CATEGORY	A	B	C	D
LPV DA	1710-1 268 (300-1)			
LNAV/VNAV DA	1840-1½ 398 (400-1½)			
LNAV MDA	1820-1 378 (400-1)			1820-1¼ 378 (400-1¼)
CIRCLING	2000-1 553 (600-1)		2100-1¾ 653 (700-1¾)	2100-2 653 (700-2)

NC-2, 19 MAY 2022 to 16 JUN 2022

NC-2, 19 MAY 2022 to 16 JUN 2022