

APP CRS	Rwy Idg	N/A
180°	TDZE	N/A
	Apt Elev	329

RNAV (GPS)-A
BRUNSWICK COUNTY (LVL)

RNP APCH.

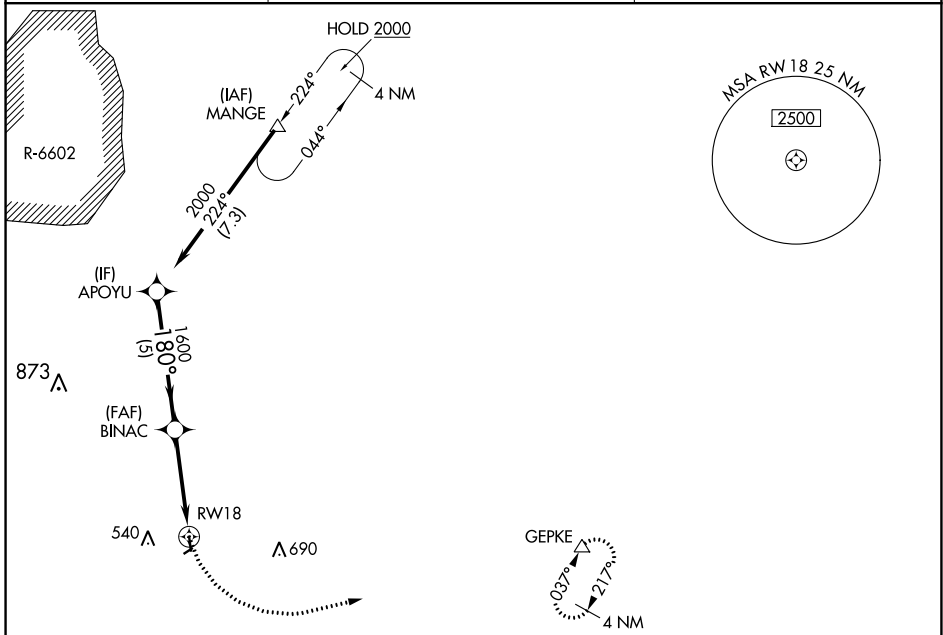
▼ Procedure NA at night. Helicopter visibility reduction below 1 SM NA. When local altimeter setting not received, use South Hill altimeter setting and increase call MDA 60 feet.
▲

MISSED APPROACH: Climbing left turn to 4000 direct GEPKE and hold, continue climb-in-hold to 4000.

AWOS-3
119.625

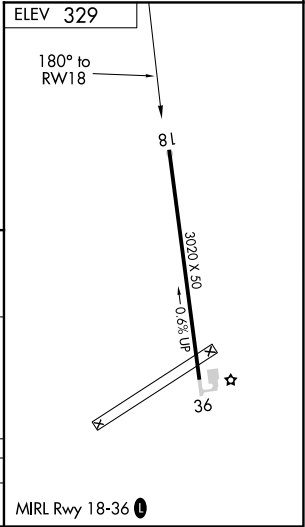
WASHINGTON APP CON
118.75 377.1

UNICOM
122.8 (CTAF) **①**



NE-3, 19 MAY 2022 to 16 JUN 2022

NE-3, 19 MAY 2022 to 16 JUN 2022



APOYU	Visual Segment - Obstacles.	4000	GEPKE
2000	BINAC		▲
180°	RW18		
5 NM	3.9 NM		
CATEGORY	A	B	C
CIRCLING	1340-3	1011 (1100-3)	NA

MIRL Rwy 18-36 **①**