

LOC I-FZU 111.1	APP CRS 259°	Rwy Idg TDZE Apt Elev	7004 462 463
---------------------------	------------------------	-----------------------------	---

ILS or LOC RWY 26L

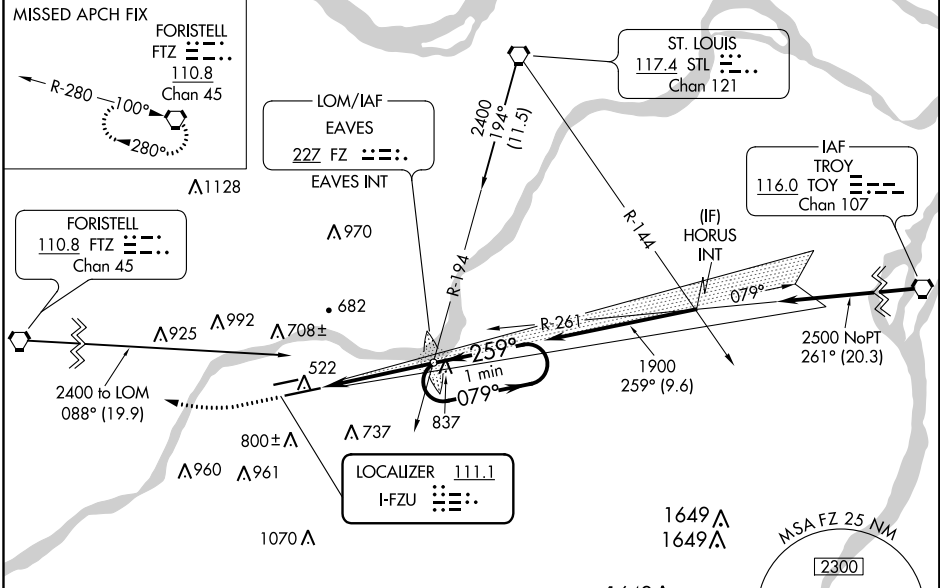
SPIRIT OF ST LOUIS (SUS)

⚠ When local altimeter setting not received, use St Louis Lambert Intl altimeter setting and increase all DA to 719 and all MDA 60 feet, increase S-LOC Cat C and D visibility 1/8 mile. For inop MALSR, increase S-LOC 26L Cats C/D visibility to 1 7/8 miles. For inop MALSR when using St Louis Lambert Intl altimeter setting, increase S-LOC 26L Cats C/D visibility to 2 miles. *RVR 1800 authorized with the use of FD or AP or HUD to DA (NA when using St Louis Lambert Intl altimeter setting).

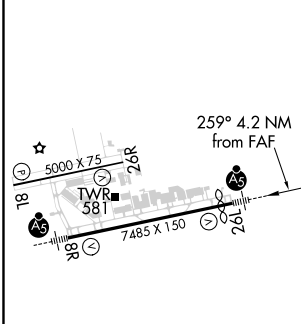
MALSR

MISSED APPROACH:
Climb to 2400 then right turn direct FTZ VORTAC and hold.

ATIS 134.8	ST. LOUIS APP CON 126.5 254.3	SPIRIT TOWER* 124.75 (CTAF) 0 257.2	GND CON 121.7	CLNC DEL 133.1	ST. LOUIS CLNC DEL 121.7 (when tower closed)	UNICOM 122.95
----------------------	---	--	-------------------------	--------------------------	---	-------------------------



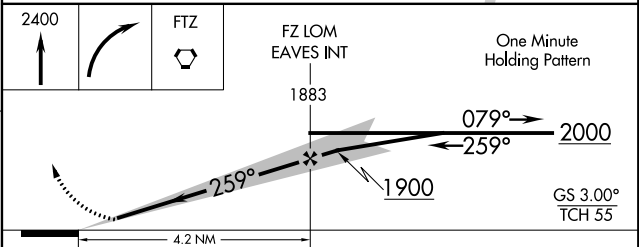
ELEV 463	D	TDZE 462
----------	----------	----------



HIRL Rwy 8R-26L
MIRL Rwy 8L-26R

FAF to MAP 4.2 NM

Knots	60	90	120	150	180
Min:Sec	4:12	2:48	2:06	1:41	1:24



CATEGORY	A	B	C	D
S-ILS 26L *	662/24 200 (200-1/2)			
S-LOC 26L	1140/24 678 (700-1/2)	1140-1 1/2 678 (700-1 1/2)		
CIRCLING	1140-1 677 (700-1)	1140-2 677 (700-2)	1140-2 1/4 677 (700-2 1/4)	

NC-3, 19 MAY 2022 to 16 JUN 2022

NC-3, 19 MAY 2022 to 16 JUN 2022