


LOC I-SUS 110.55	APP CRS 079°	Rwy Idg TDZE Apt Elev	7414 462 463
----------------------------	------------------------	-----------------------------	---

ILS or LOC RWY 8R

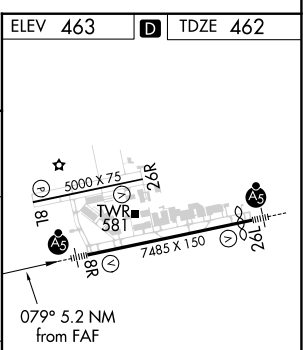
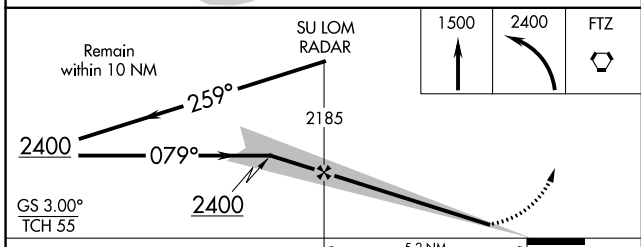
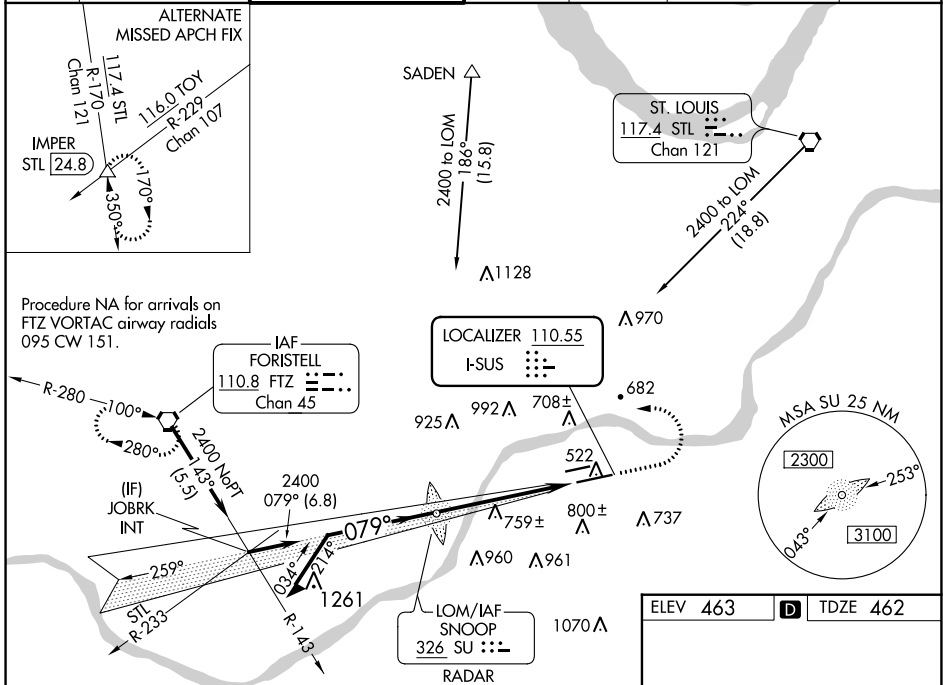
SPIRIT OF ST LOUIS (SUS)

⚠ When local altimeter setting not received, use St Louis Lambert Intl altimeter setting and increase all DA to 719 feet, all MDA 60 feet, increase S-LOC 8R Cats C/D to RVR 5000 and Circling Cat C visibility ¼ mile. For inop MALS, increase S-LOC 8R Cats C/D visibility to RVR 6000. For inop MALS when using St Louis Lambert Intl altimeter setting, increase S-LOC 8R Cats C/D visibility to 1½ mile.
 *RVR 1800 authorized with the use of FD or AP or HUD to DA (NA when using St Louis Lambert Intl altimeter setting).


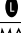
MALS 

MISSED APPROACH: Climb to 1500 then climbing left turn to 2400 direct FTZ VORTAC and hold.

ATIS 134.8	ST. LOUIS APP CON 126.5 254.3	SPIRIT TOWER* 124.75 (CTAF) 0 257.2	GND CON 121.7	CLNC DEL 133.1	ST. LOUIS CLNC DEL 121.7 (when tower closed)	UNICOM 122.95
----------------------	---	---	-------------------------	--------------------------	---	-------------------------



CATEGORY	A	B	C	D
S-ILS 8R*	662/24 200 (200-½)			
S-LOC 8R	880/24	418 (500-½)	880/40	418 (500-¾)
CIRCLING	1100-1	637 (700-1)	1120-1¾ 657 (700-1¾)	1140-2¼ 677 (700-2¼)

ELEV 463	D	TDZE 462			
MIRL Rwy 8L-26R 					
HIRL Rwy 8R-26L 					
FAF to MAP 5.2 NM					
Knots	60	90	120	150	180
Min:Sec	5:12	3:28	2:36	2:05	1:44

NC-3, 19 MAY 2022 to 16 JUN 2022

NC-3, 19 MAY 2022 to 16 JUN 2022