

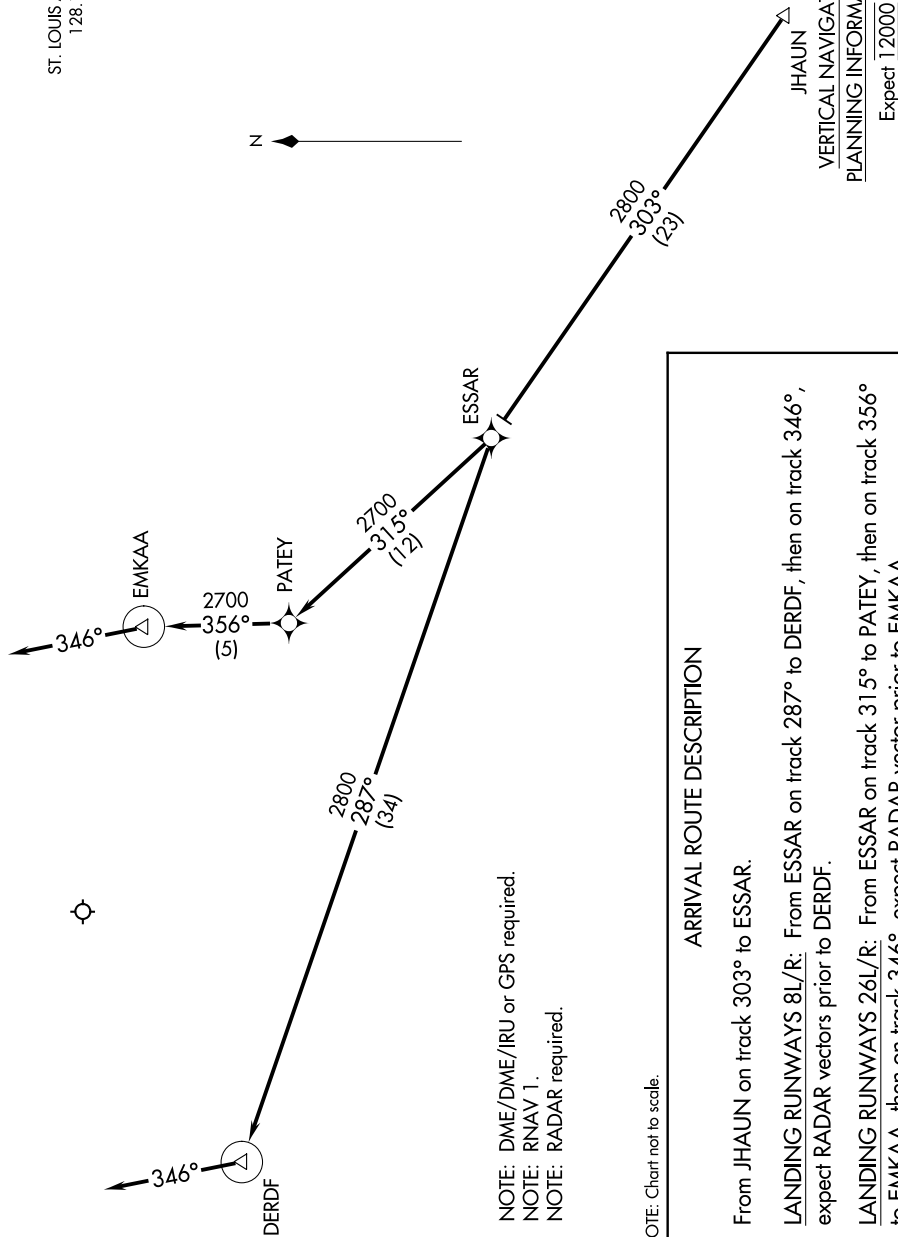
(JHAUN.JHAUN1) 16259

JHAUN ONE ARRIVAL (RNAV)

AL-5400 (FAA)

SPRIT OF ST LOUIS (STUS)
ST. LOUIS, MISSOURI

ATIS
134.8
ST. LOUIS APP CON
128.1 307.05



JHAUN
VERTICAL NAVIGATION
PLANNING INFORMATION
Expect 12000

ARRIVAL ROUTE DESCRIPTION

From JHAUN on track 303° to ESSAR.

LANDING RUNWAYS 8L/R: From ESSAR on track 287° to DERDF, then on track 346°, expect RADAR vectors prior to DERDF.

LANDING RUNWAYS 26L/R: From ESSAR on track 315° to PATEY, then on track 356° to EMKAA, then on track 346°, expect RADAR vector prior to EMKAA.

NOTE: DME/DME/IRU or GPS required.
NOTE: RNAV 1.
NOTE: RADAR required.

NOTE: Chart not to scale.

NC-3, 19 MAY 2022 to 16 JUN 2022

NC-3, 19 MAY 2022 to 16 JUN 2022

JHAUN ONE ARRIVAL (RNAV)
(JHAUN.JHAUN1) 15NOV12

ST. LOUIS, MISSOURI
SPRIT OF ST LOUIS (STUS)