

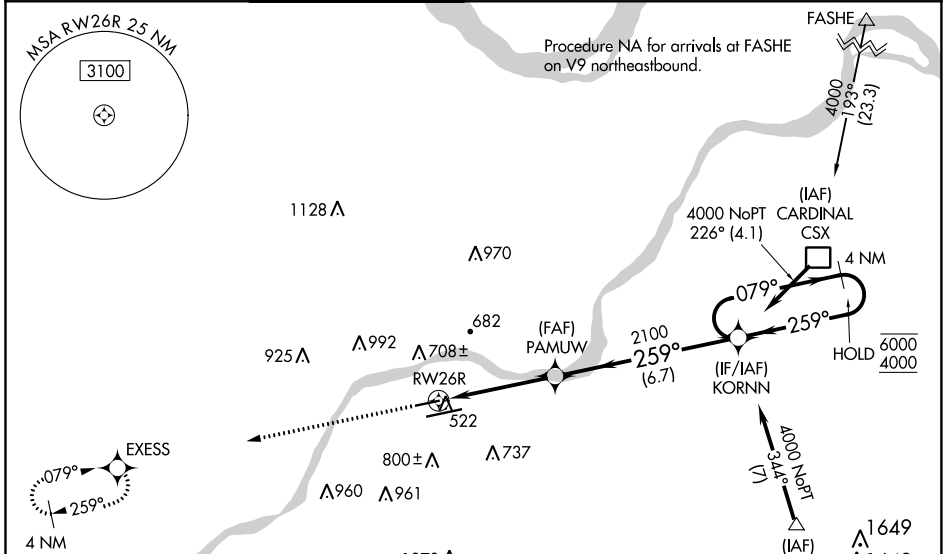
WAAS CH 97414 W26A	APP CRS 259°	Rwy Idg TDZE 463 Apt Elev 463
--	------------------------	---

RNAV (GPS) RWY 26R

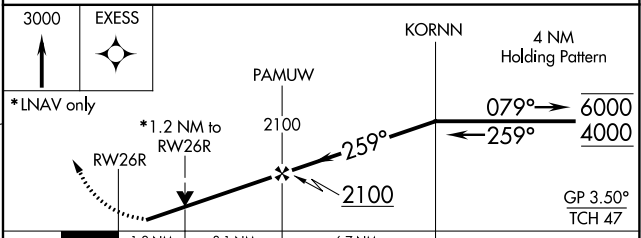
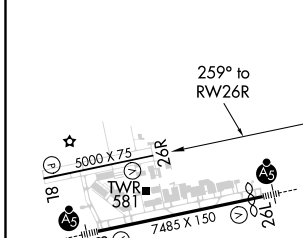
SPIRIT OF ST LOUIS (SUS)

RNP APCH.		<p>▼ Rwy 26R helicopter visibility reduction below $\frac{3}{4}$ SM NA. For uncompensated Baro-VNAV systems, LNAV/VNAV NA below -18°C or above 54°C. VDP and Baro-VNAV NA when using St Louis Lambert Intl altimeter setting. When local altimeter setting not received, use St Louis Lambert Intl altimeter setting and increase LPV DA to 768 feet, LNAV/VNAV DA to 834 feet, and all MDA 60 feet, increase LPV and LNAV/VNAV all Cats visibility $\frac{1}{8}$ mile.</p>		<p>MISSED APPROACH: Climb to 3000 direct EXCESS and hold.</p>	
-----------	--	--	--	---	--

ATIS 134.8	ST. LOUIS APP CON 126.5 254.3	SPIRIT TOWER* 124.75 (CTAF) 0 257.2	GND CON 121.7	CLNC DEL 133.1	ST. LOUIS CLNC DEL 121.7 (when tower closed)	UNICOM 122.95
----------------------	---	---	-------------------------	--------------------------	---	-------------------------



ELEV 463	D	TDZE 463
-----------------	----------	-----------------



CATEGORY	A	B	C	D
LPV DA	713- $\frac{3}{4}$	250 (300- $\frac{3}{4}$)		NA
LNAV/VNAV DA	780- $\frac{7}{8}$	317 (400- $\frac{7}{8}$)		NA
LNAV MDA	940-1	477 (500-1)		NA
CIRCLING	1100-1	1120-1		NA
	637 (700-1)	657 (700-1)		

NC-3, 19 MAY 2022 to 16 JUN 2022

NC-3, 19 MAY 2022 to 16 JUN 2022